

# WHY TIMELY PREFINISHED STEEL FRAMES?

CLASSIC

ADJUSTABLE

KERF

ADJUSTABLE KERF

DOUBLE EGRESS

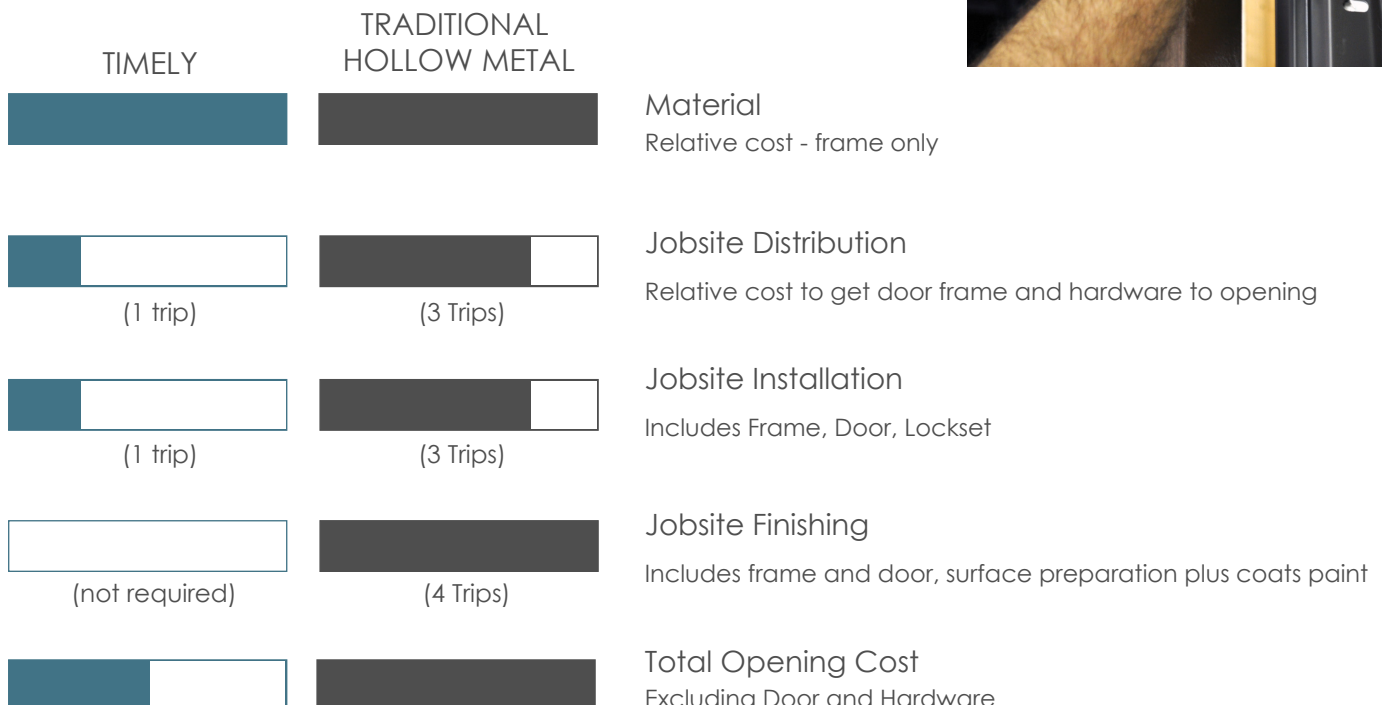
POCKET TRIM KIT



### TOTAL OPENING COST SAVINGS

Prefinished opening systems eliminate multiple trips to each opening by laborers, installers and painters. Traditional primed hollow metal frames require a minimum of **10 trips** to each opening. Trips to distribute and install the frame, then back to finish the frame with the door, then another trip to distribute and install all hardware. The prefinished opening system requires only **2 trips** to the opening – one to distribute the material and one to install all components. This results in substantial labor savings – at least 40% – when compared to hollow metal frames.

*Approximate total cost for material, finishing, jobsite distribution and installation.*



### COMPARISON

Comparison of Timely 20 gauge frame to Hollow Metal 16 gauge frame in drywall partition.

	TIMELY FRAME	HOLLOW METAL FRAME
<b>STATIC LOAD</b> Simulates Total Door Weight	500 Lbs.	228 Lbs.
<b>TWIST FROM WALL</b> Simulates anchor failure force	200 lbs.	200 lbs.
<b>FORCED ENTRY</b> Force to spread jamba to release latch	565 lbs.	420 lbs.

\* The limit on the scale used was 500 pounds. Subsequent testing showed a total door weight of 730 pounds before failure

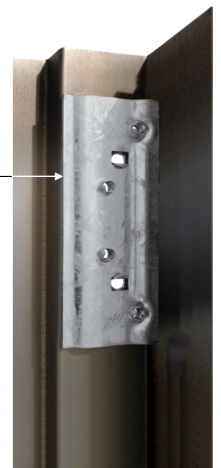
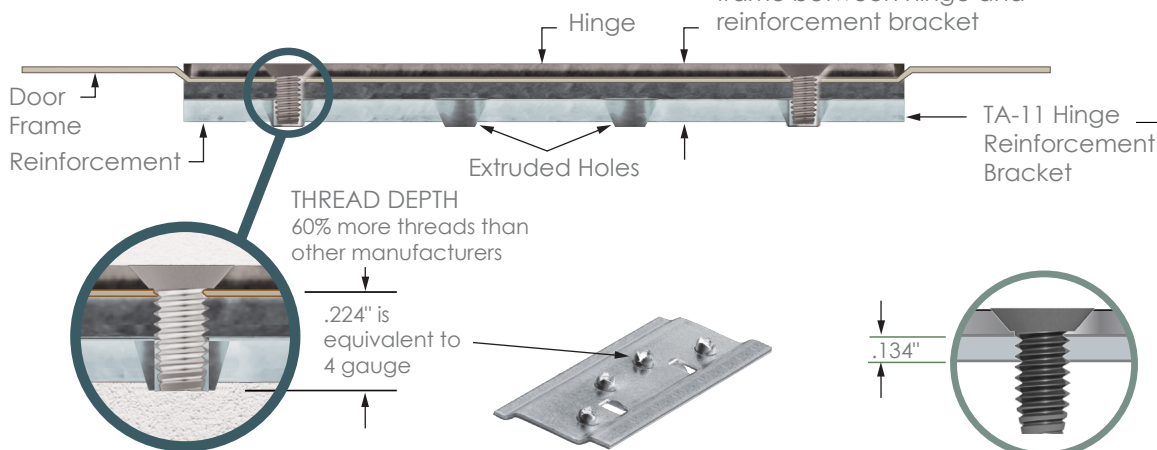


### HINGE REINFORCEMENT FACTS - EXTRUDED SCREW HOLES VS TAPPED SCREW HOLES

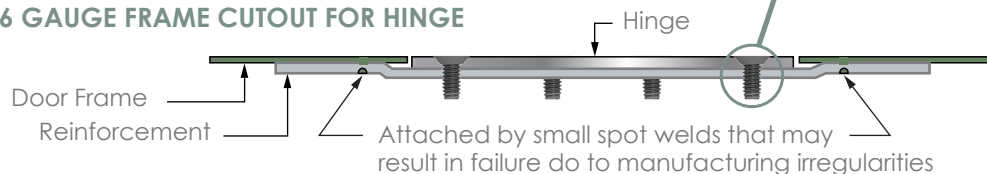
Following Timely's performance tradition to retain as much steel as possible our hinge reinforcements are prepped for top performance. No spot welds to fail. Timely's hinge reinforcements screw holes are extruded therefore the pushed out steel grabs more threads on hinge screws giving the frame a stronger holding capacity. This method exceeds the requirements of ANSI A250.8 (10 gauge) reinforcement. When all done Timely's hinge preparations and reinforcements capture 60% more hinge screw threads than traditional hollow metals 10 gauge reinforcement. 100% performance guarantee over the life of the building.

#### TIMELY 20 GAUGE FRAME EMBOSSED FOR HINGE

Attached by sandwiching frame between hinge and reinforcement bracket



#### HOLLOW METAL 16 GAUGE FRAME CUTOUT FOR HINGE

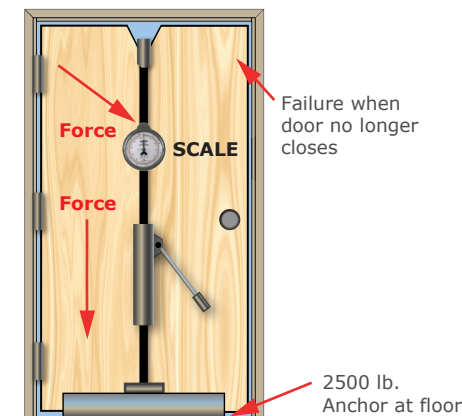


### PERFORMANCE

Timely 20 ga. steel frames have been tested and proven to outperform 16 ga. hollow metal frames. Certified test results prove that the engineered anchoring system using 40 or more fasteners allows the lighter gage frame to withstand far greater forces than hollow metal frames which have only six anchor points to the wall.

#### TOTAL DOOR WEIGHT

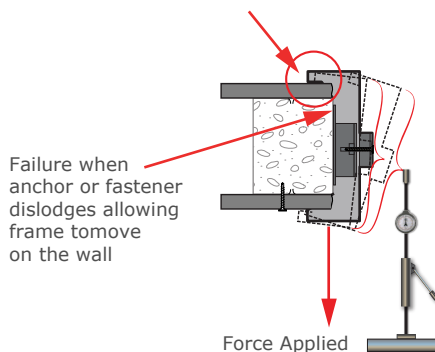
Weight added to door until door closing was impaired



#### LATERAL IMPACT (TWIST)

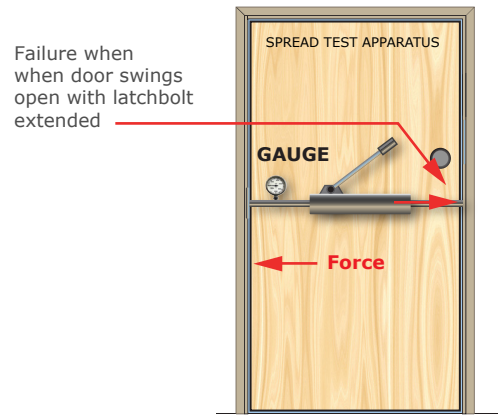
Force applied to frame until frame, anchors, or fasteners dislodged

##### Twist Test Apparatus Simulated Impact Direction



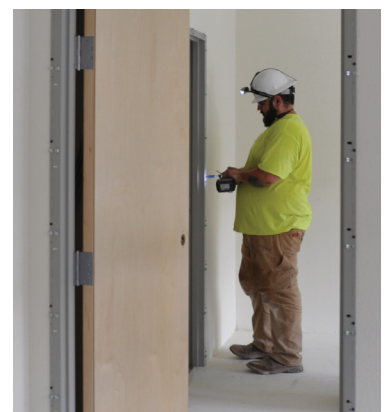
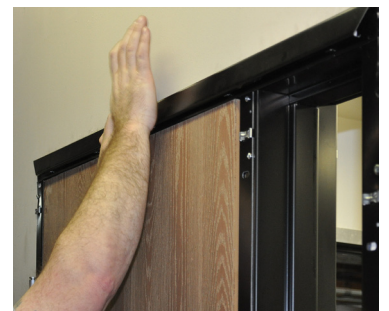
#### SECURITY (SPREAD TEST)

Force applied to frame stops – failure point occurred when door opened with latch bolt extended



### EASE OF INSTALLATION

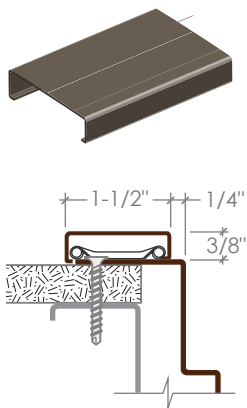
- Installs over the finished wall – no need to caulk, mask or cut in painting
- Installs at the end of the project – eliminates construction damage to doors and frames and allows furnishings to be placed prior to door installation
- Installs with the door as a template – perfect alignment of door and frame is guaranteed
- Install door, frame and hardware at one time – eliminates repetition of installing frame first, installing the door later and, at yet another time, installing the hardware. Total installation time is reduced by 2/3
- Frame can easily be adjusted or relocated – Traditional hollow metal frames are very difficult to adjust and are not easily re-used if building needs change



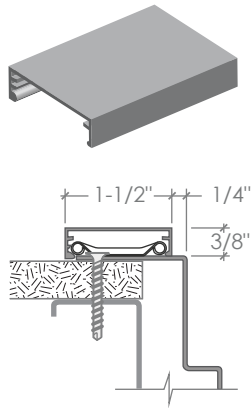


With Timely frames you can achieve the look of aluminum frames, wood frames or traditional hollow metal frames. Other trim options are available. Standard TA-8 and TA-30 Colonial Steel casings.

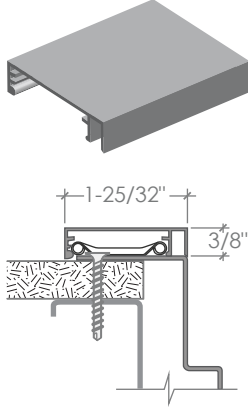
**TA-8 STEEL**



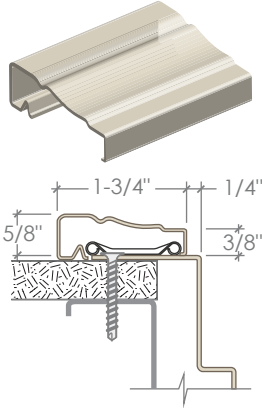
**TA-23 ALUMINUM**



**TA-28 ALUMINUM**

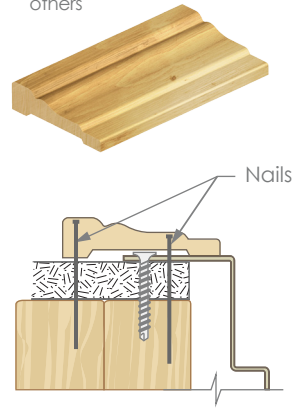


**TA-30 STEEL**



**WOOD CASING**

Supplied by others



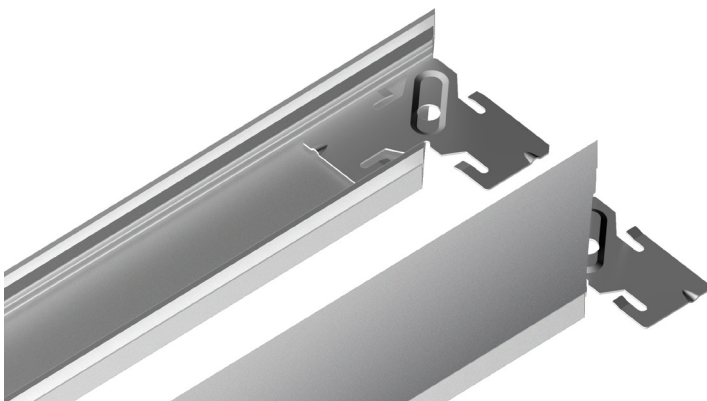
**Wood casing:** can easily be applied to Timely frames. This requires a frame without Casing Retainer Clips. Specify frames with nail holes and oval slots (**NHOS**) only Wood casing is then installed over the frame face using a nail gun or trim head screws. Casing profile must provide back clearance for screw heads used to install frame.

**Fire Ratings:** Wood casing must be applied with hot melt glue or contact adhesive on 90 minute rated frames and on all glazed openings with 45 minute or 60 minute rating. On all other fire rated frames, wood casing can be applied with nails or finish head screws on jambs and mullions.

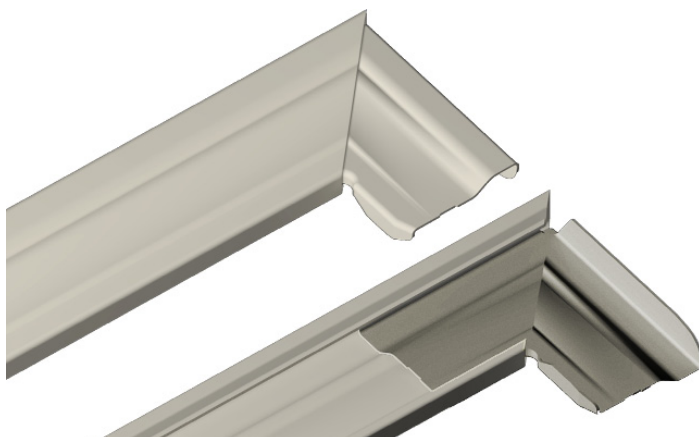
**Please select "Products > Casing Options" from the main menu if you require additional information regarding Timely's casing options.** easily be applied to Timely frames. This requires a frame without Casing Retainer Clips. Specify frames with nail holes and oval slots (**NHOS**) only Wood casing is then installed over the frame face using a nail gun or trim head screws. Casing profile must provide back clearance for screw heads used to install frame.

## CASING COMPONENTS

**TA-24** Casing Corner Piece (used with **TA-23**, **TA-28** and **TA-28M** Aluminum Casing)



**TA-31** Casing Corner Piece (used with **TA-30** Casing)



# The Open Miter Fighter!



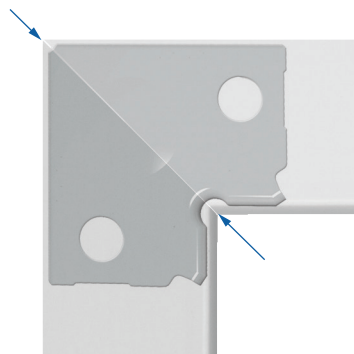
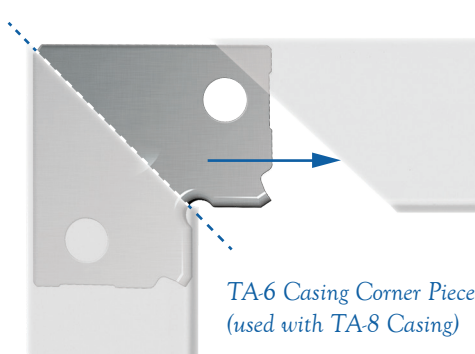
Why take chances with open miters on your door frames? Timely's patented MiterGard® helps assure a tight fit every time. At lower cost, too.

The key to it all is MiterGard's uniquely designed built-in corner piece. One section of the 'L-shaped' component is factory attached to the vertical door frame casing and the other section slides securely into the header casing for a perfect fit. This guarantees MiterGard's use and effectiveness and provides an integrated corner that is stronger and more accurate.

MiterGard also provides greater protection against open miters caused by future building

movement. And when installed according to instructions, open miters caused by installation errors can be prevented.

Installers never need to contend with easy-to-lose separate corner pieces resulting in faster installations and labor cost savings. The MiterGard is available exclusively on Timely's prefinished steel door frames, Model TA-8. Get full details today!



*MiterGard is factory-attached to vertical casing.  
Exposed section slides securely into header casing*

# Timely's Total Opening Concept Assures High Performance.

Timely's prefinished steel door frames have the flexibility to go wherever your imagination takes you in color coordination and interior design. Timely offers unmatched quality and performance with sturdy, full perimeter anchoring, corner alignment for perfect miters, 90-minute fire rating and fast, easy installation.

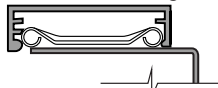
## Timely Trim Options

We widen your creative horizons with prefinished steel frames featuring our "snap-lock" casings in four profiles including steel and aluminum.

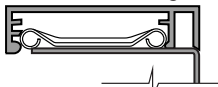
### TA-8 Steel Casing



### TA-23 Aluminum Casing



### TA-28 Aluminum Casing

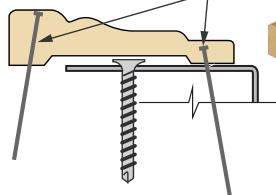


### TA-30 Colonial Steel Casing



### Wood Casings

(provided by others) Ideal for the strength and economy of a steel frame and the charm of wood millwork.

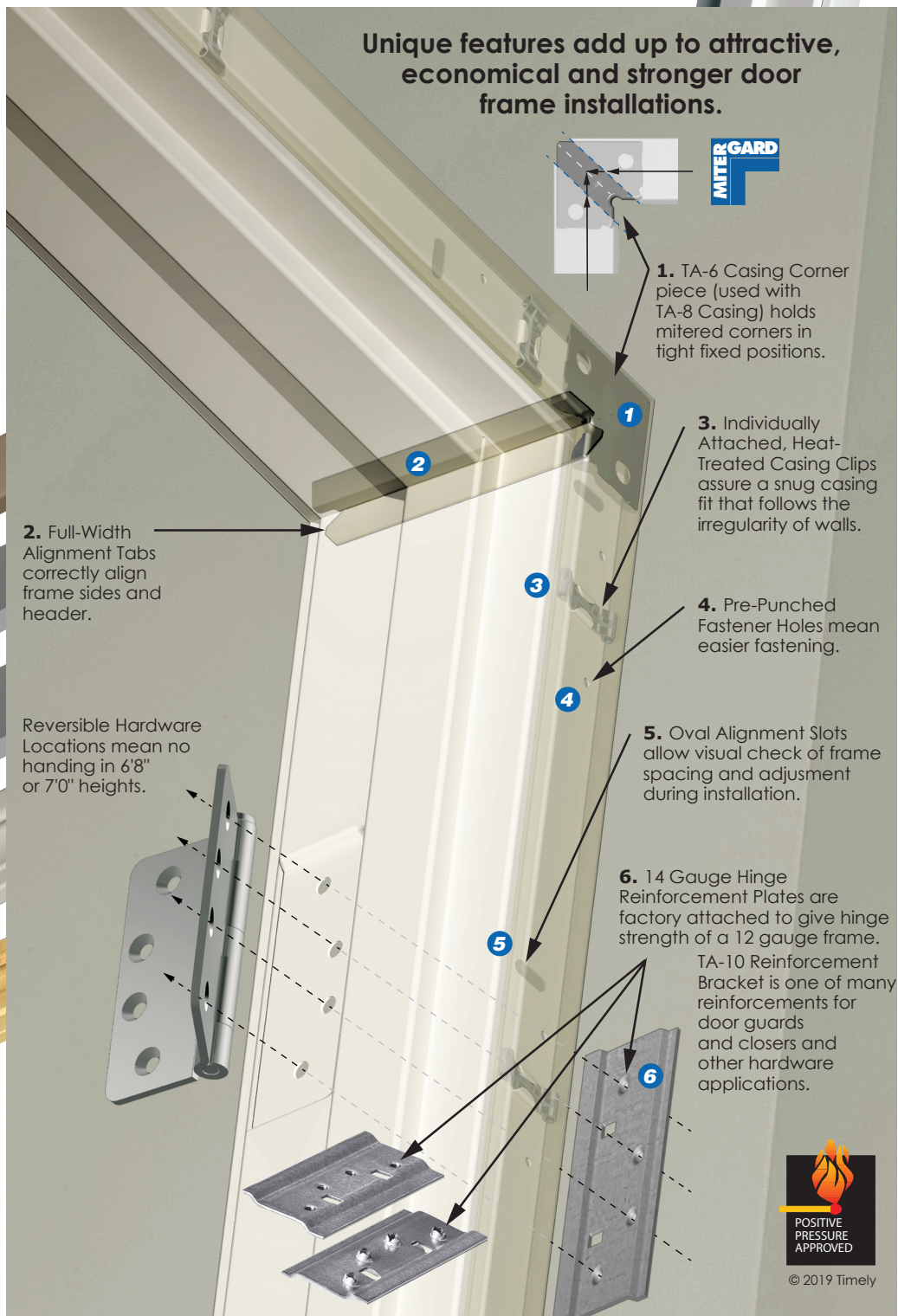


## Timely's Durable, Polyester Coatings

Choose from 7 standard or 30 custom colors, or we'll match any color you wish (colors shown may vary slightly).



## Unique features add up to attractive, economical and stronger door frame installations.



**TIMELY**  
**PREFINISHED STEEL DOOR FRAMES**  
 A DIVISION OF S.D.S. INDUSTRIES, INC.



© 2019 Timely





## TIMELY GALXC™ - HOT DIPPED GALVANIZED

Our new GalXC material will be Standard for all Timely door frames raising the quality and performance properties to the highest level at an exceptional value. GalXC is a Hot Dipped Galvanized product that provides superior corrosion resistance in the harshest environments while balancing outstanding surface, gauge, and shape quality.

- **Easier to specify**, ALL Timely frames are made of GalXC, so they can be installed in virtually any environment
- The GalXC zinc coating protects the steel by acting as a sacrificial anode, any exposed parts of the steel, such as exposed edges on the strike emboss or at the end of each frame, are also protected by the thicker zinc coating
- G-30 Coating weight
- Meets all specifications in the ASTM A653 spec

**INSTALLATION PROCESS** - Our frames can be stored at the job-site longer during inclement weather conditions. The prefinished opening system requires only 2 trips to the opening – one to distribute the material and one to install all components.

**VERSATILITY** - We now offer frames which can be used in interior and exterior applications with the proper flashing.

**ORDERING PROCESS** - It is now easier to order our product, no need to specify different frames for bathrooms or other humid environments.

### TIMELY LEED SUSTAINABILITY CONTRIBUTION

The suppliers of the hot-rolled steel coils which are converted into the finished product use a basic oxygen furnace (BOF) process with a typical recycled content of 25% to 35%. The finished product contains approximately 34.9% recycled steel. Post-consumer scrap accounts for approximately 24.3%, and pre-consumer scrap accounts for approximately 9.4%.

## **GALXC™ Reframing the Industry**