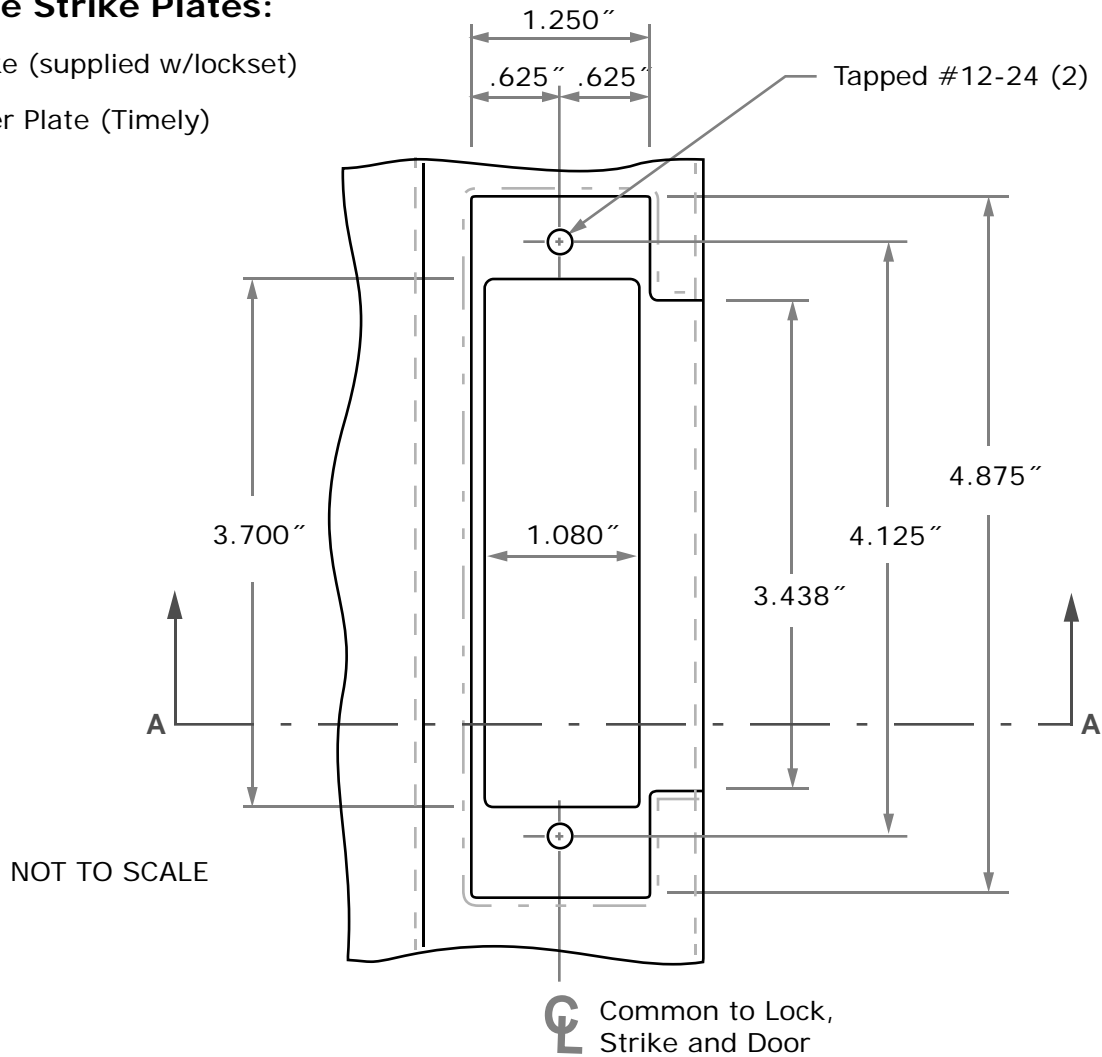


Compatible Strike Plates:

- ANSI Strike (supplied w/lockset)
- TA-32 Filler Plate (Timely)



Section A-A

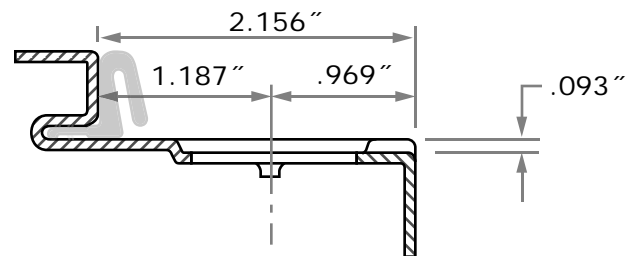
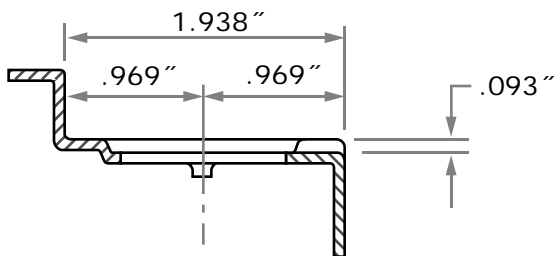
Classic
S-Series

Classic
C-Series

Adjustable
A-Series

Kerfed
CK-Series

Adjustable Kerfed
AK-Series



ASA - ANSI 4 7/8"

1 3/4" Door

Template
S-57