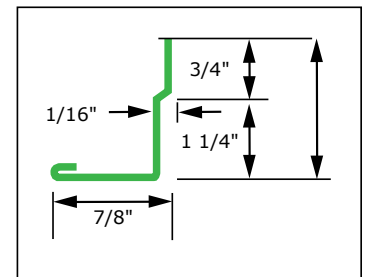
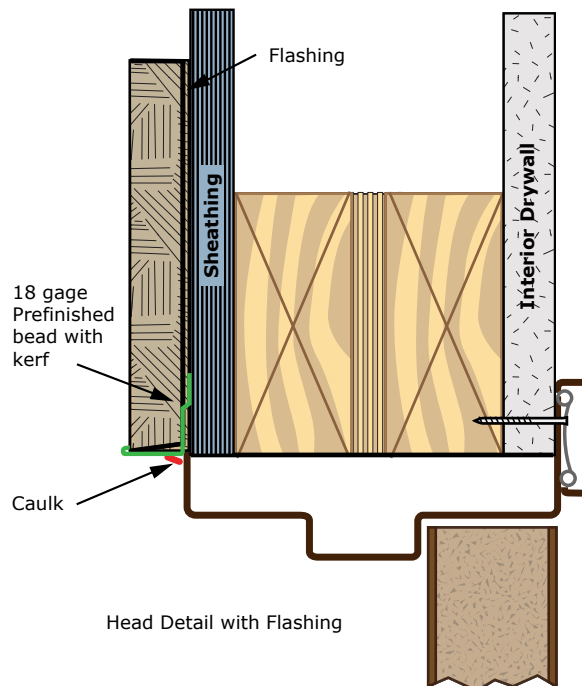
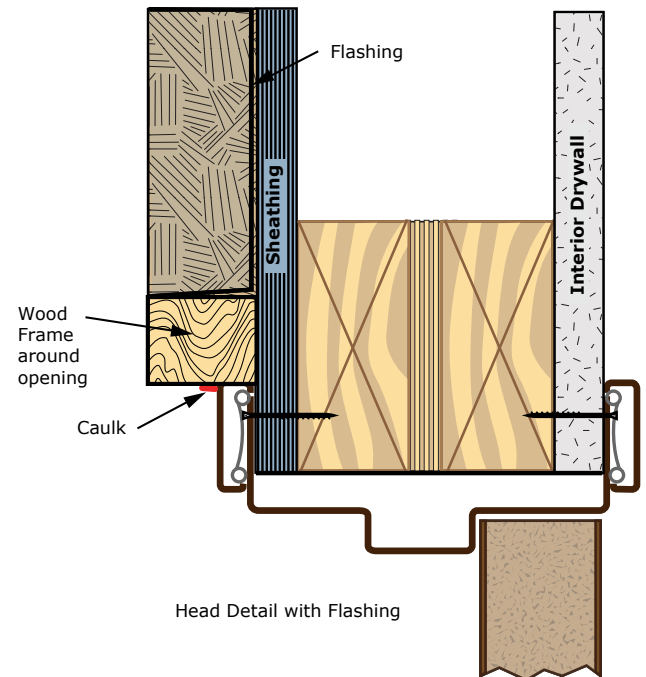


Exterior framing with wood studs is similar to interior walls but exterior finishes and flashing become the critical issues. Exterior openings must provide a barrier against air and water infiltration. This is accomplished using various methods of sealing the opening components and flashing the opening to prevent water from traveling from the exterior to the interior of the frame and the building. By recessing the opening under an overhang, the opportunity for falling water or even wind-driven water to reach the opening is greatly reduced. Even installing the frame with a sub frame creates an overhang that will normally suffice to eliminate the need for flashing.

If the opening is to be installed without an overhang, a flashing method must be used that will direct the water to the outside of the frame. Since the Timely frame installs over a finished wall, it would sleeve over traditional flashing and the water would be directed to the inside of the frame. Moisture inside the frame leads to rust and an even more dangerous result – mold and mildew. Several options have been presented but there are only two basic methods to adequately flash an exterior frame.

The easiest and most common method is to create a set-back, or mini overhang by building a wood frame around the opening slightly larger than the outside dimensions of the Timely steel frame. The wood frame is caulked and the flashing system is then applied to direct the water over the top of the wood frame and to the outside of the Timely frame

Because the exterior wall material is usually applied long before the opening is ready for a door frame, another possibility is to provide a metal bead or wood stucco ground with a kerf. The bead or wood ground is applied and the flashing and wall can be applied. When the drywall has been applied and the building is ready for the door frame, the exterior is ordered blank with no casing and slides into the kerf. If desired, a heat treated nail or drywall screw can be applied at the bead to anchor the frame and then the frame is caulked around the perimeter.



NOTE: You can use a Timely frame for your EXTERIOR INSTALLATIONS as long you take precautions to FLASH THE FRAME CORRECTLY.

If a building is using stucco on the exterior and using a Timely frame in an exterior location the following is what can be done to make sure the opening is adequately flashed?

We recommend a special stucco mold that has a Kerf cut out in it. The mold can be mounted to the stud and the building paper and stucco materials can be applied in the normal fashion. Then, when ready, the frame can be installed with the exterior nailing flange in the kerf to provide a secure weather tight installation.

The frame must be ordered with nail holes only on the exterior side for this application to work.

NOTE: You can use a Timely frame for your EXTERIOR INSTALLATIONS as long you take precautions to FLASH THE FRAME CORRECTLY.

