



Timely is pleased to provide the following information, and wishes to thank you for your interest in our Timely line of products



Prefinished Opening Systems

Superior
Performance

Design
Flexibility

Reduced
Cost





Prefinished Opening System

- Originated over 50 years ago
- 16 gauge hollow metal frames still commonly used
- Prefinished opening system provides lower cost, sustainability and considerable design flexibility
- Many misconceptions still abound about 20 gauge steel frames
- As more people use frames, concept has gained acceptance and benefits are being realized by more and more industry professionals





Superior Performance

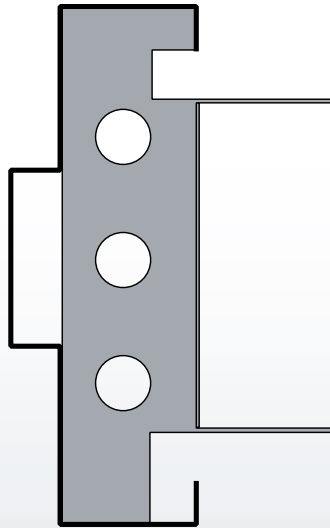
Hollow Metal Frames vs Prefinished Drywall Frames Differences, Installation and Performance



Steel Frame Types

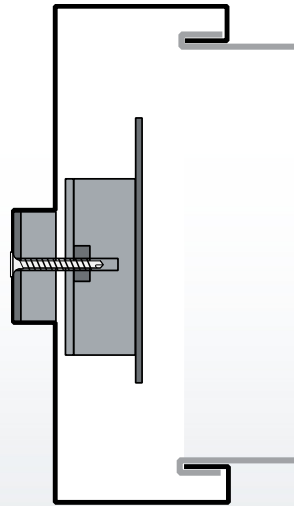
Masonry Frames

16 gauge Welded
or Knocked Down



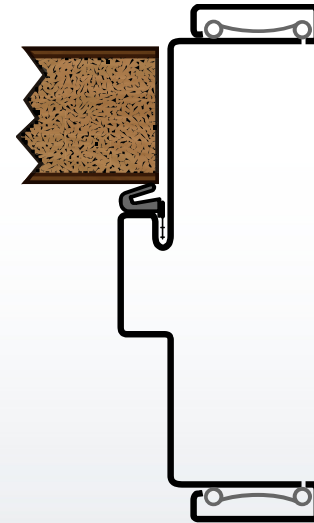
Knocked Down Drywall Frames

16 or 18 gauge



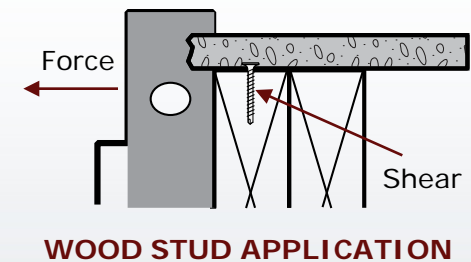
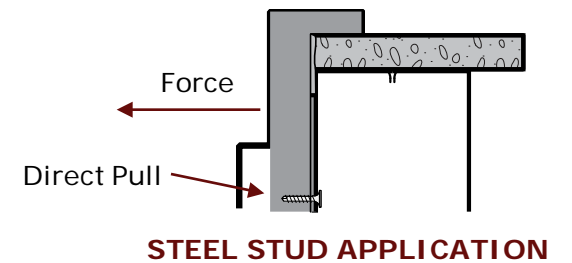
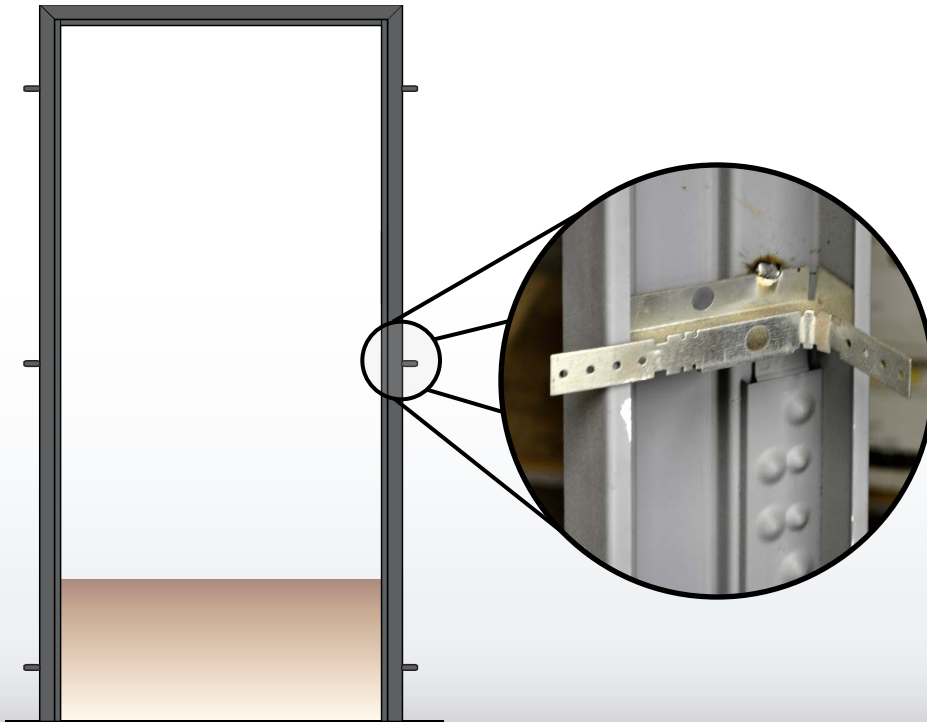
Pre-finished Drywall Frames

18 or 20 gauge
(with applied casings)



Masonry Frames – Welded or Knocked Down (KD)

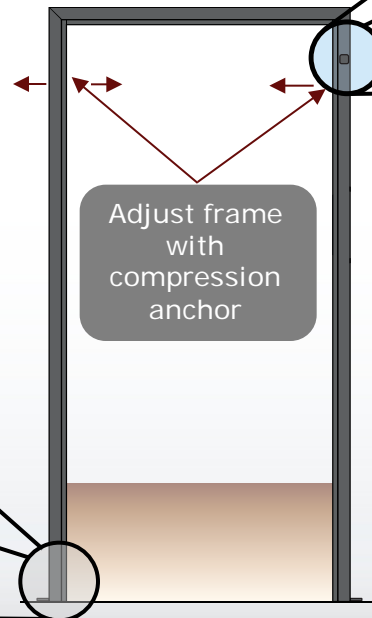
- 6 Anchors to wall
- 2 Floor anchors
- Steel Studs – screws in “pull” configuration instead of “shear”
- Wood Studs – fastener heads project on wall



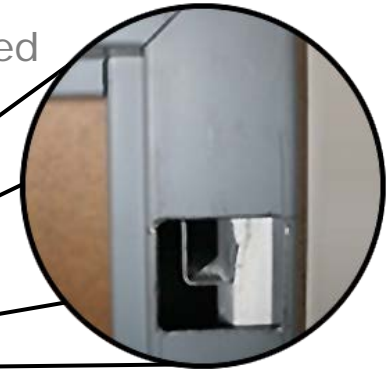
Hollow Metal Drywall Frames

- Slip over a finished wall
- Compression anchors “push” on studs – not physically attached
- Only fasteners to structure are 4 screws at base strap anchors
- Cannot adjust to uneven wall surfaces

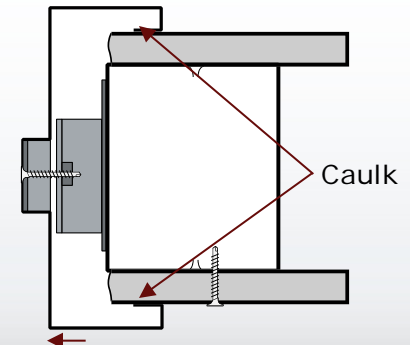
Base Anchor – One screw each side. This is the only physical connection of the frame to the structure



Adjust frame with compression anchor

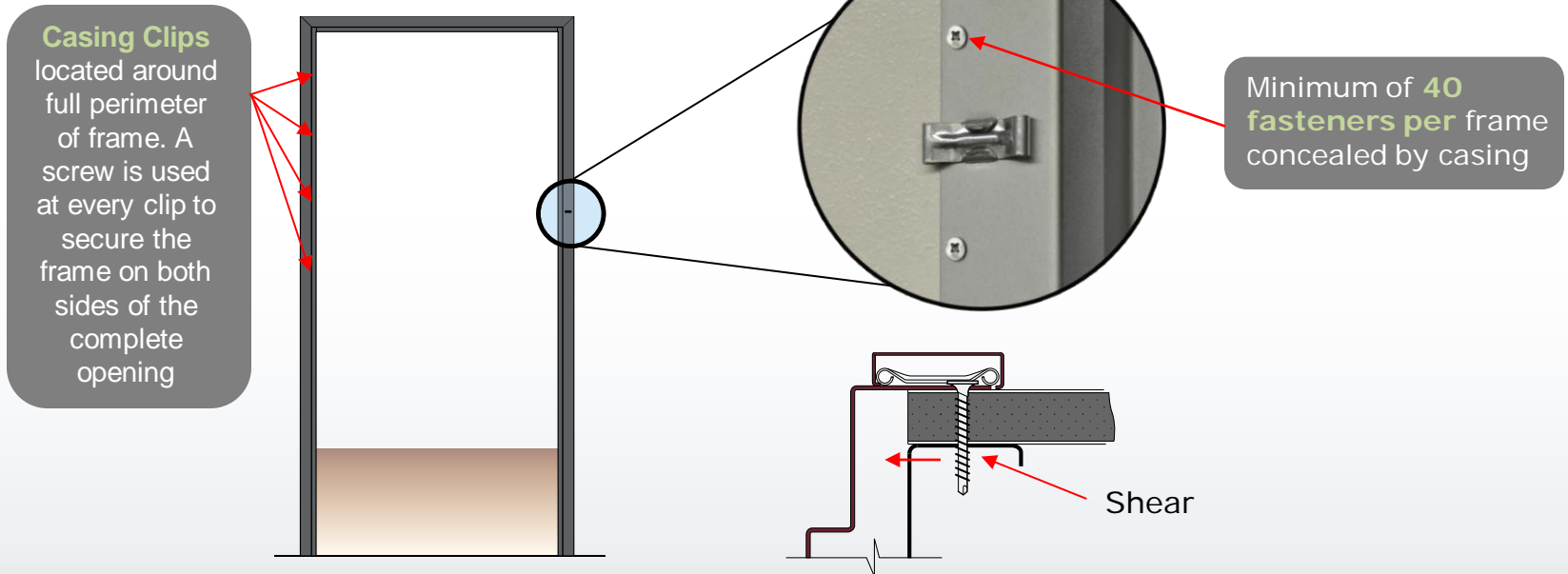


Compression Anchor – No physical attachment to structure



Prefinished Drywall Frame with Applied Casing

- Anchors every 11" around full perimeter of frame on both sides
- Minimum of 40 anchors to structure for 3'0" x 7'0" frame
- All fasteners in shear to the force of the door weight
- Applied casing conceals all fasteners





Performance Myths – 20 Gauge Steel Frames

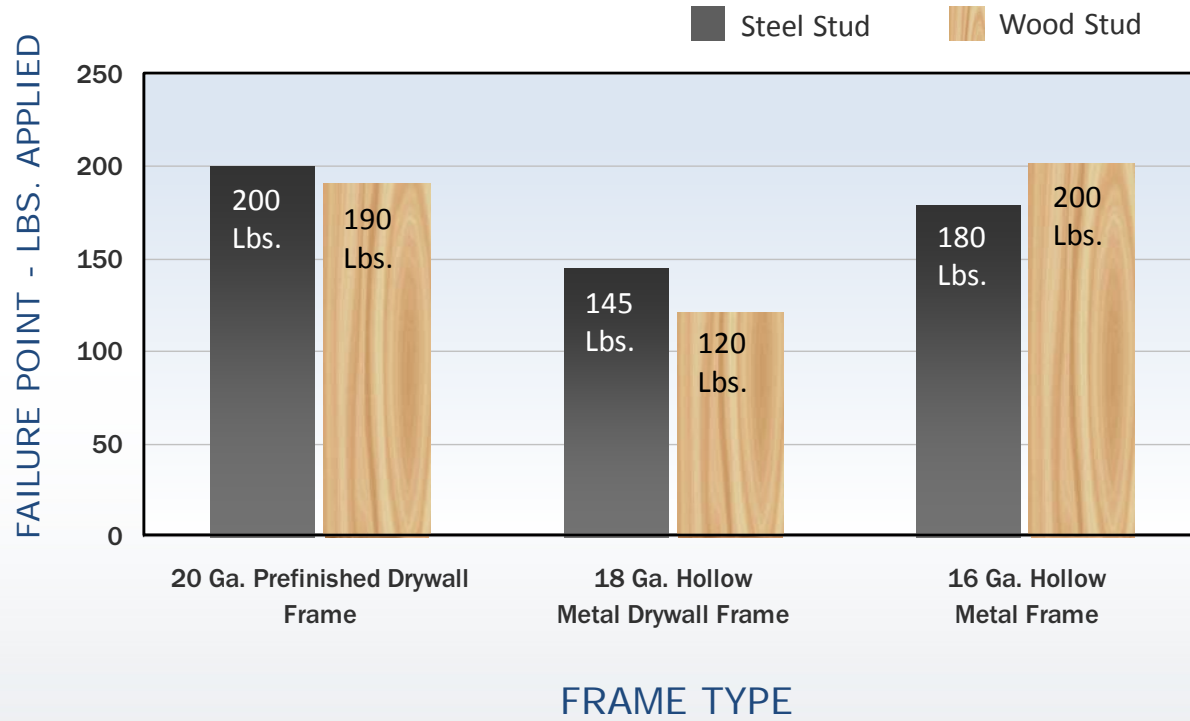


1. Light gauge steel frames **cannot withstand impact**
2. Cannot use on **heavy** doors
3. Door **sags** in opening
4. Light gauge steel is **easily broken into by intruders**
5. Cannot use on **wide** doors
6. **Added steel thickness improves performance**

Performance Comparison

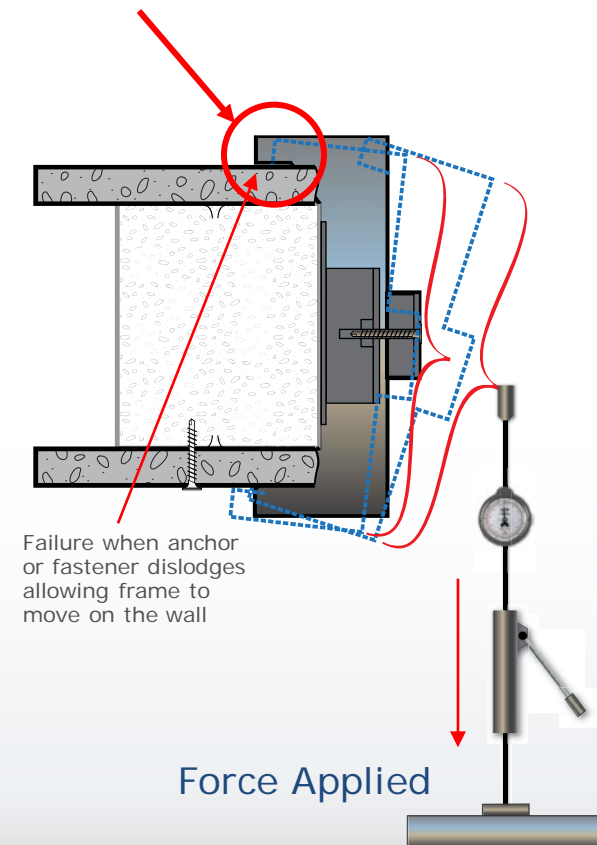
LATERAL IMPACT (TWIST)

Force applied to frame until frame, anchors, or fasteners dislodged



TWIST TEST APPARATUS

Simulated Impact Direction



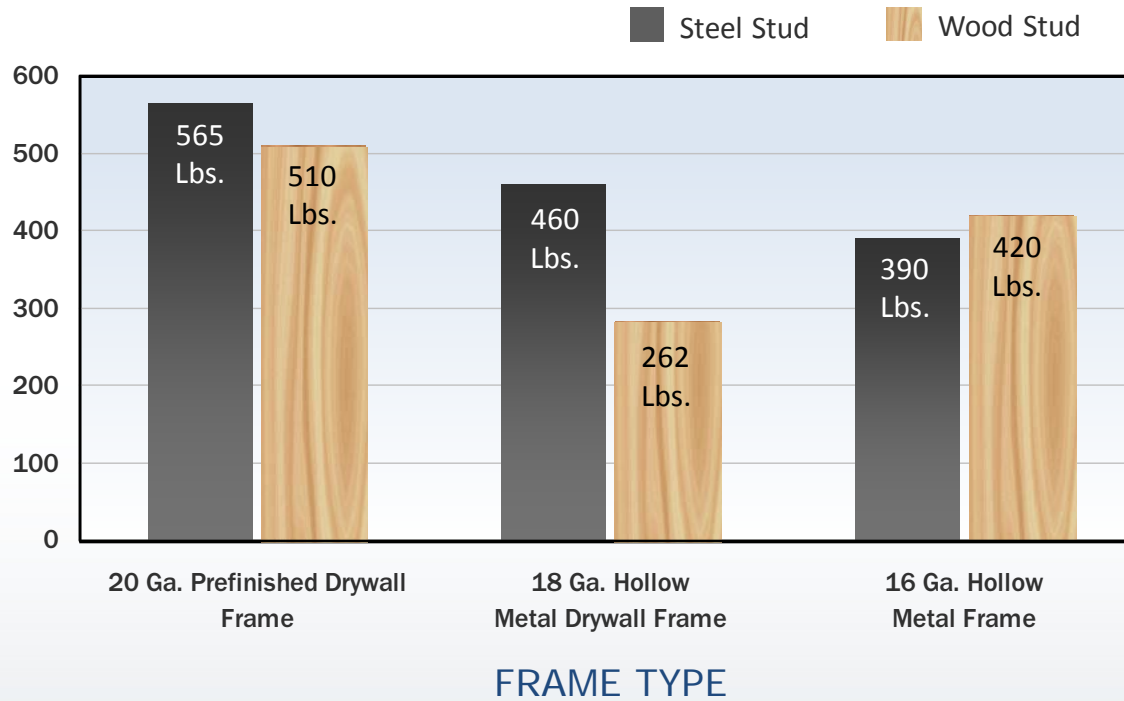
Independent testing conducted and Certified by Product Evaluation & Certification, Inc. (PEC) - 4/24/86

Performance Comparison

SECURITY (SPREAD TEST)

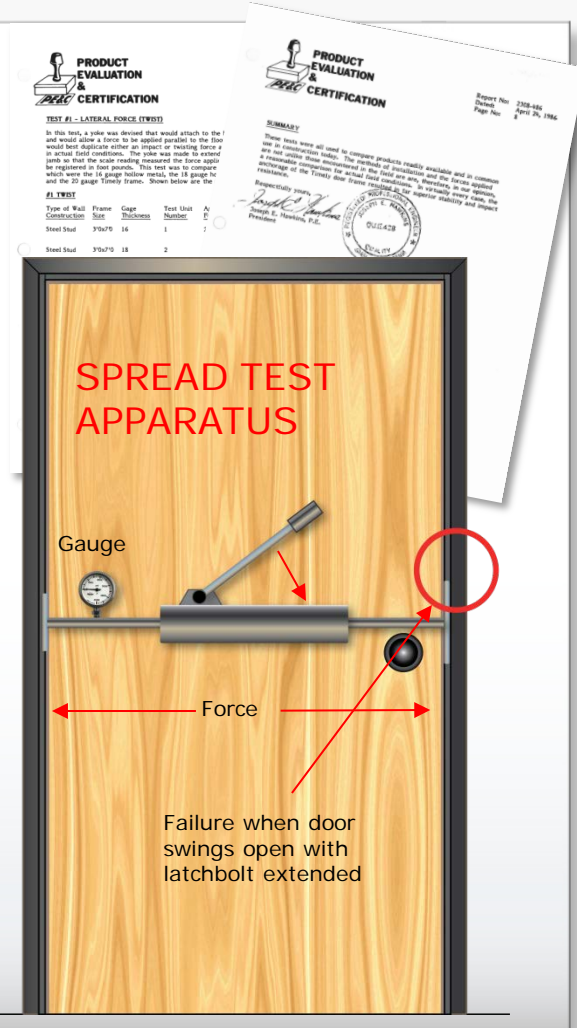
Force applied to frame stops –
failure point occurred when door unlatched

FAILURE POINT - LBS. APPLIED



FRAME TYPE

Independent testing conducted and Certified by Product Evaluation & Certification, Inc. (PEC) – 4/24/86



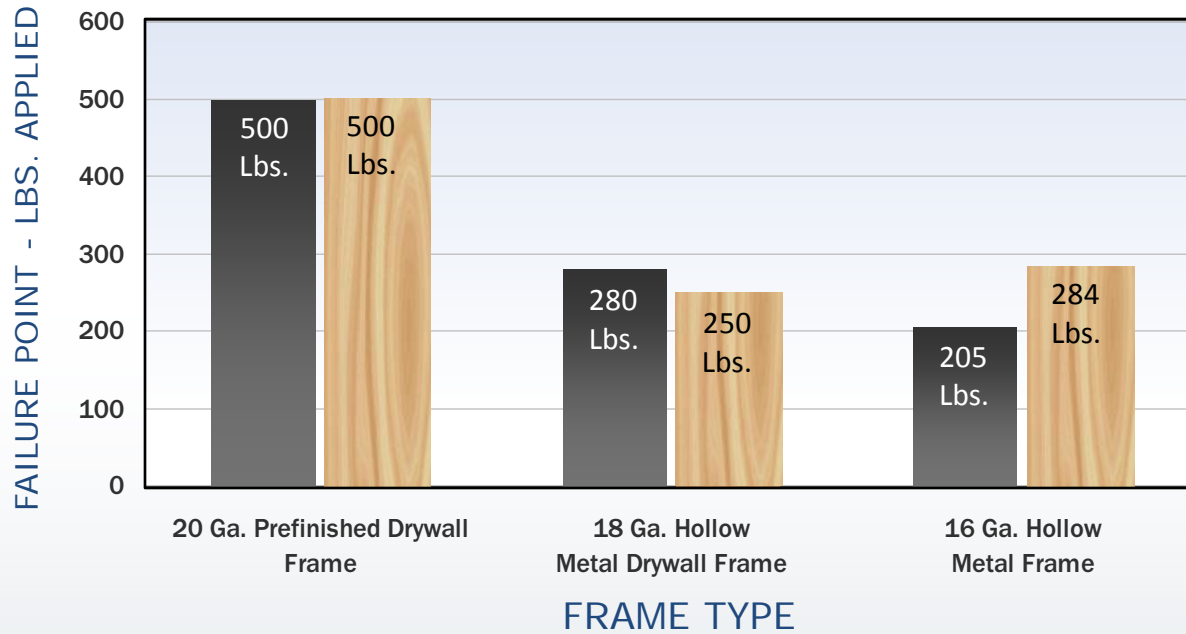
Performance Comparison

TOTAL DOOR WEIGHT

Weight added to door until door closing was impaired

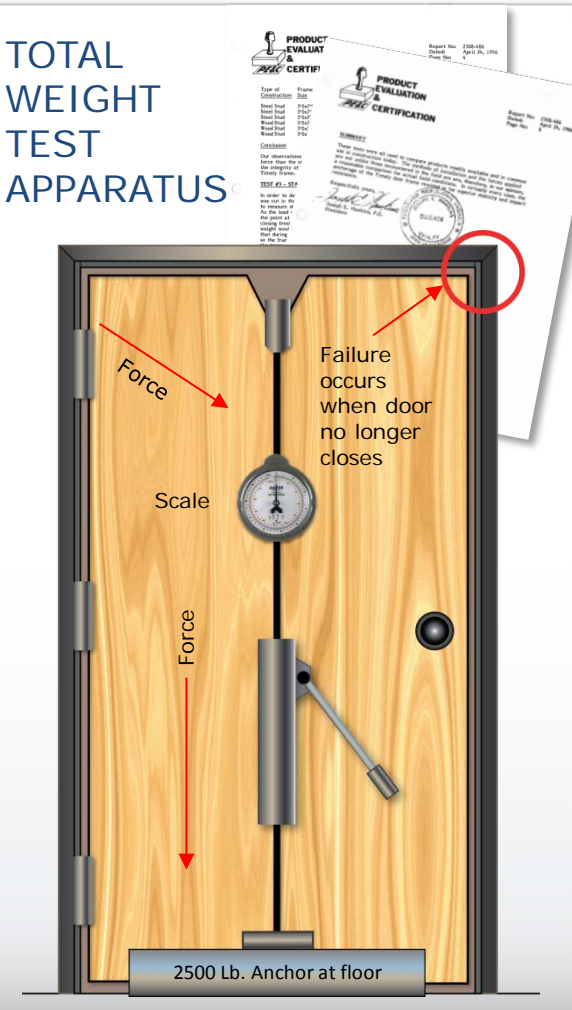
Note: 500 Pounds was the maximum scale measurement – door continued to operate in Timely Frame

■ Steel Stud ■ Wood Stud



Independent testing conducted and Certified by Product Evaluation & Certification, Inc. (PEC) – 4/24/86

TOTAL WEIGHT TEST APPARATUS





Performance Summary

- Frame performance is based on how the frame attaches to the structure, not on the thickness of steel
- Prefinished drywall frame anchors around the full perimeter on both sides making the frame part of the structure
- Hollow Metal Masonry frames rely on six (sometimes eight) 18 ga. anchors that can be easily torn loose or deflect
- Hollow Metal Drywall frames only anchor to the structure at two points at the base of the frame

Performance Under Fire



Fire Ratings

- 90 Minute Rating – Positive Pressure
 - Single and Pair Frames
 - 20 ga., 18 ga.
 - Up to 8'0" x 9'0"
- 45 Minute Rating – Positive Pressure
 - Sidelight and Borrowed light
 - 36" width – up to 1296 sq. in.
 - 24" width – up to 2568 sq. in.



Design Flexibility

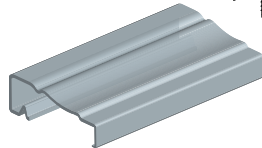
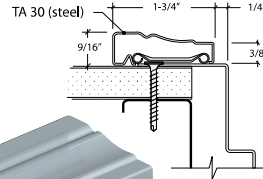
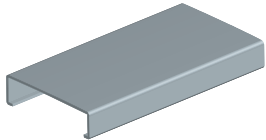
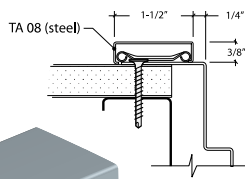
Colors, Casings and Creativity



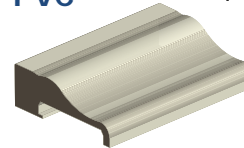
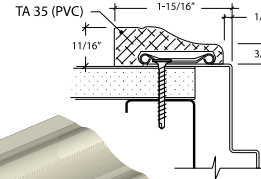
Design Flexibility

CASINGS

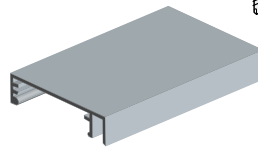
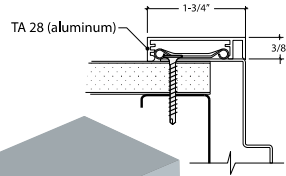
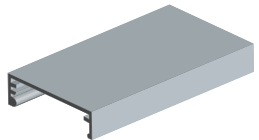
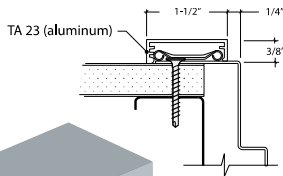
STEEL



PVC



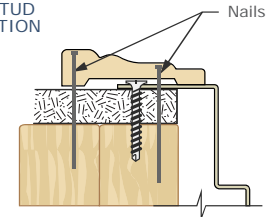
ALUMINUM



Casing availability varies by manufacturer. Some manufacturers may have fewer types available.

WOOD

WOOD STUD APPLICATION



Note: Timely recommends using 20 gage Frame for easy Nailing with Gun.



(Supplied by others)

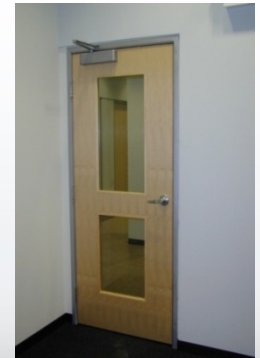
COLORS

- Standard Colors
- Custom Colors
- Alumatone –Clear anodized aluminum
- Brass and Stainless Steel
- Black Nickel



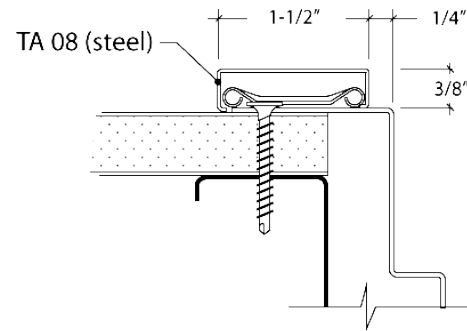
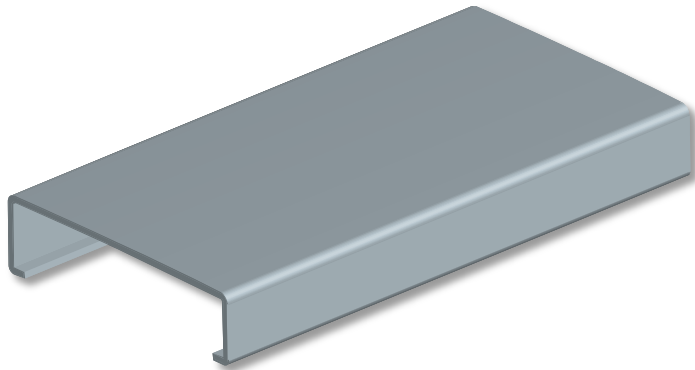
CREATIVITY

- Sidelights
- Borrowed Lights
- Transoms and Clerestories
- 90° Corner Post Cover

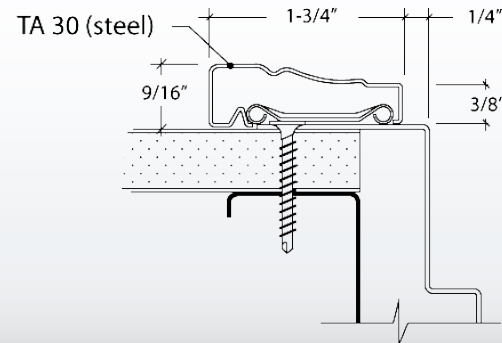
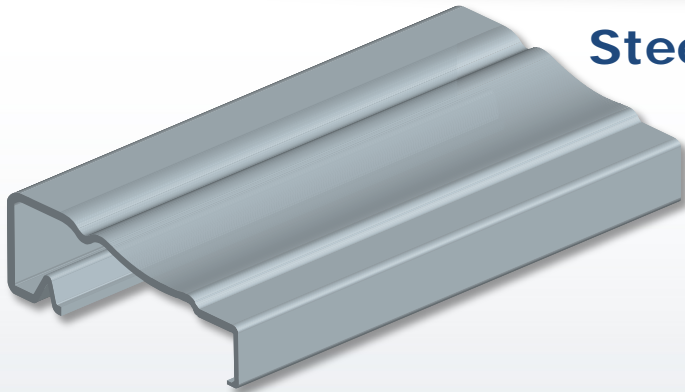


Casing Options

3/8" Steel - 1/4" reveal



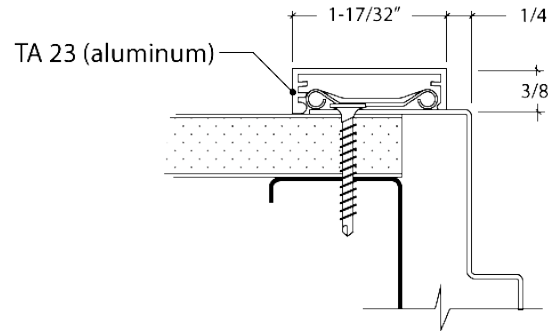
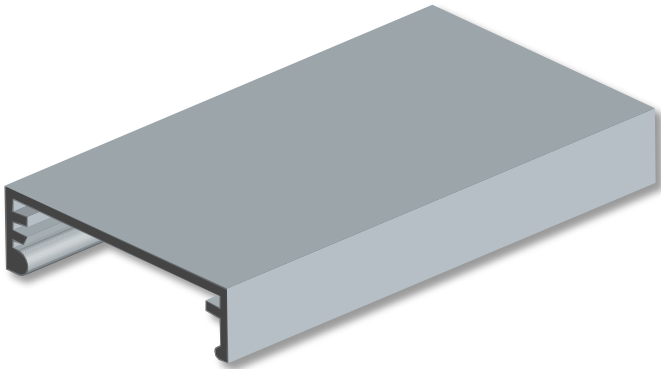
Steel Colonial - 1/4" reveal



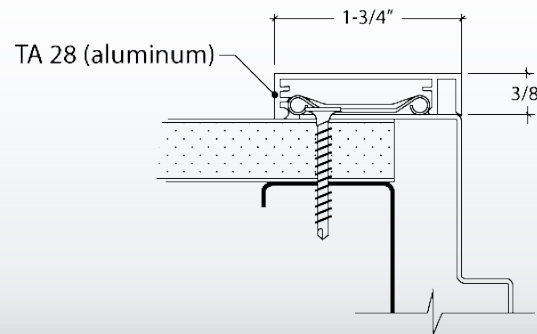
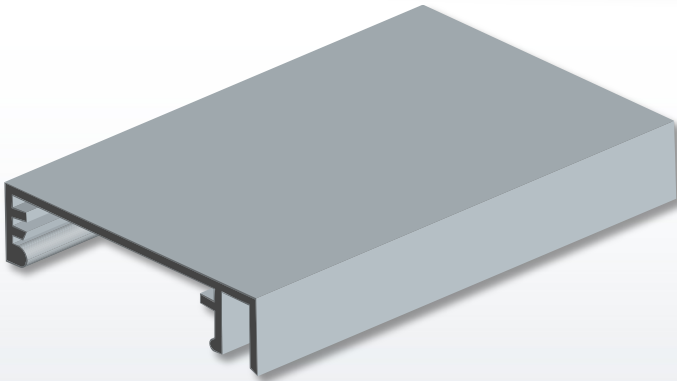
Casing availability varies by manufacturer. Not all casing types are available from some manufacturers

Casing Options

Aluminum - 1/4" reveal



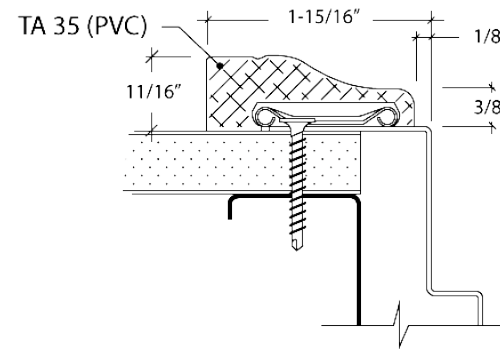
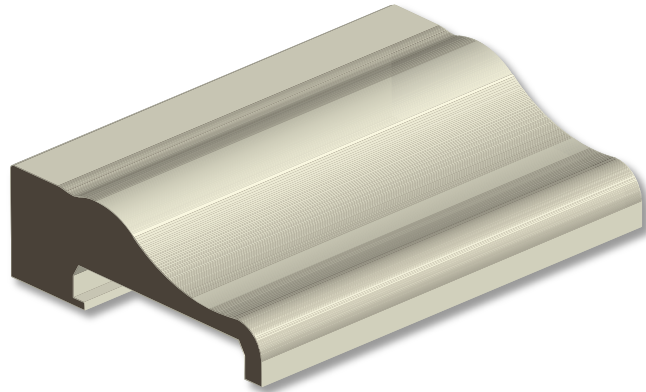
Aluminum - No reveal



Casing availability varies by manufacturer. Not all casing types are available from some manufacturers

Casing Options

Colonial PVC - 1/8" Reveal



Casing availability varies by manufacturer. Not all casing types are available from some manufacturers

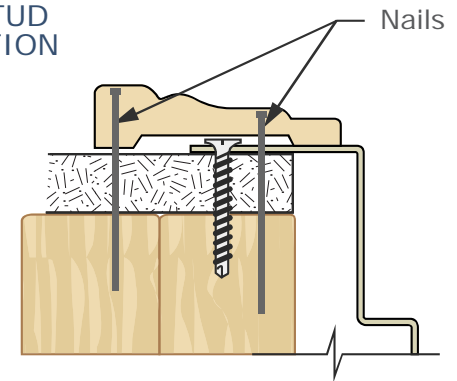
Casing Options

Wood Casing – (Supplied by others)



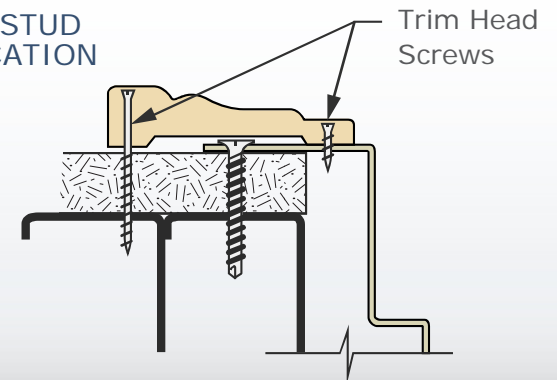
Wood casing can easily be applied to Timely frames. This requires a frame without Casing Retainer Clips. Specify frames with nail holes and oval slots (NHOS) only. Wood casing is then installed over the frame face using a nail gun or trim head screws. Casing profile must provide back clearance for screw heads used to install frame.

WOOD STUD APPLICATION



Note: Timely recommends using 20 gage Frame for easy Nailing with Gun.

STEEL STUD APPLICATION



Casing availability varies by manufacturer. Not all casing types are available from some manufacturers



Total Opening Cost

Reduced Costs, LEED and Sustainability



TRIPS TO EACH OPENING – Primed Hollow Metal Frames

Material Distribution:

One trip each for frame, door and hardware

3 *

Install:

One trip each for frame, door and hardware

3

Finish Preparation:

One trip to opening

1

Painting:

One trip per coat of paint

2

Finish Touch-up and Cleaning:

Final trip to opening

1

15 minutes per trip plus installation labor time!

10 Trips

* Number is total trips to opening required



TRIPS TO EACH OPENING REQUIRED

– Prefinished Frames with applied casings

Material Distribution:

Door, Frame and Hardware in one trip to the opening

1 *

Installation Labor:

Prefinished Door, Frame and Hardware in one trip to the opening

1

2



* Number is total trips to opening required

Reduced Cost

Frame Cost

5% savings

Finishing Labor

100% savings

Distribution Labor

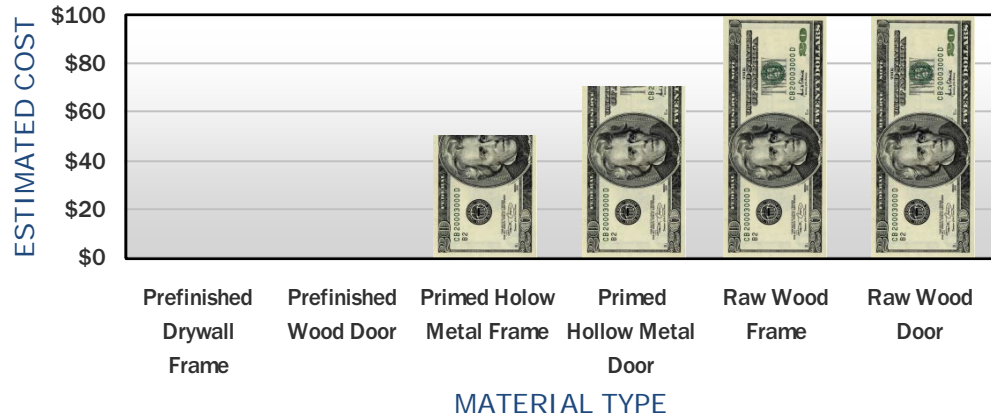
Up to 2/3 savings

Installation Labor

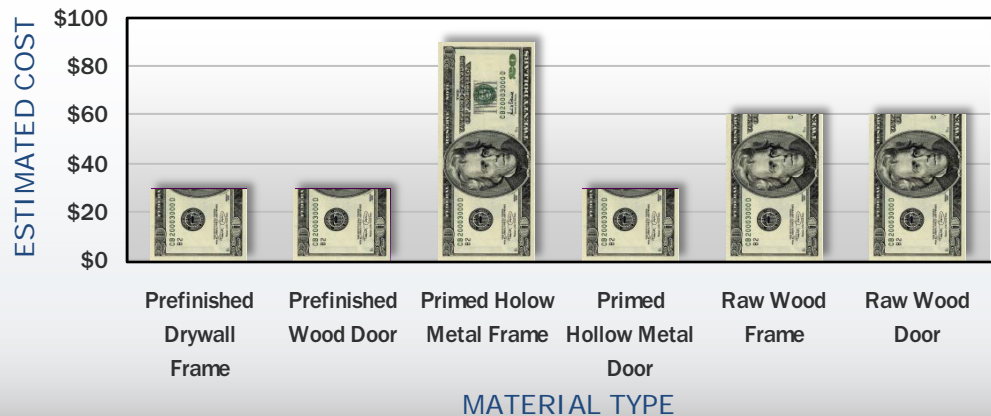
Up to 2/3 savings

Total Opening Savings of at least 40%!

FINISHING COST COMPARISON



LABOR COST - DISTRIBUTION AND INSTALLATION



LEED Contribution

- MR4.1, MR4.2 – Recycled Content
 - Steel Frame with Steel Casing
 - 28.9% of Material cost
 - Steel Frame with Aluminum Casing
 - 41.2% – 45% of Material cost
- Daylighting and Views
 - Contributes to Daylighting and Views using sidelights, borrowed lights and transoms
- Proximity
 - Manufactured in Pacoima, CA 91331 (MR5.1)
- Jobsite Contribution
 - All packaging recyclable
 - No jobsite VOC issues



Sustainability

- Easily re-installed in new openings
- 100% recyclable product



Specifications

Projects, Details and Specifications





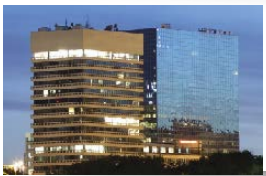
Project Applications



Hospitality



Assisted Living



Office-Professional



Multi-Family



Medical Office



Schools



Dormitories



Hospital Non-Surgical

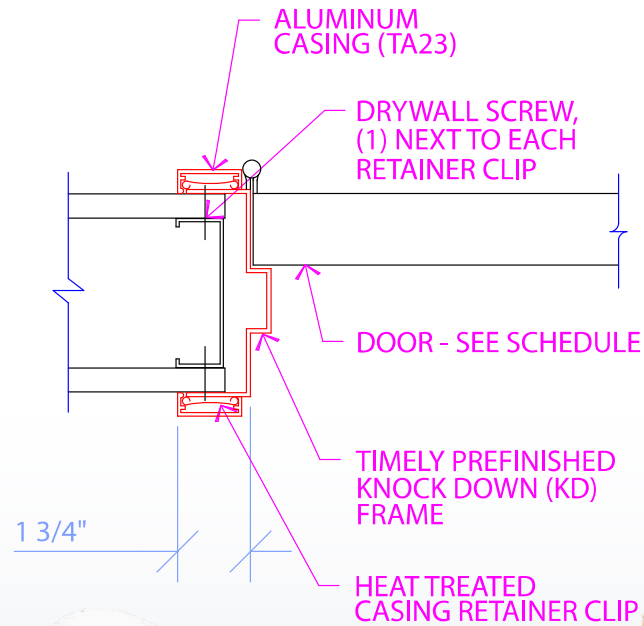
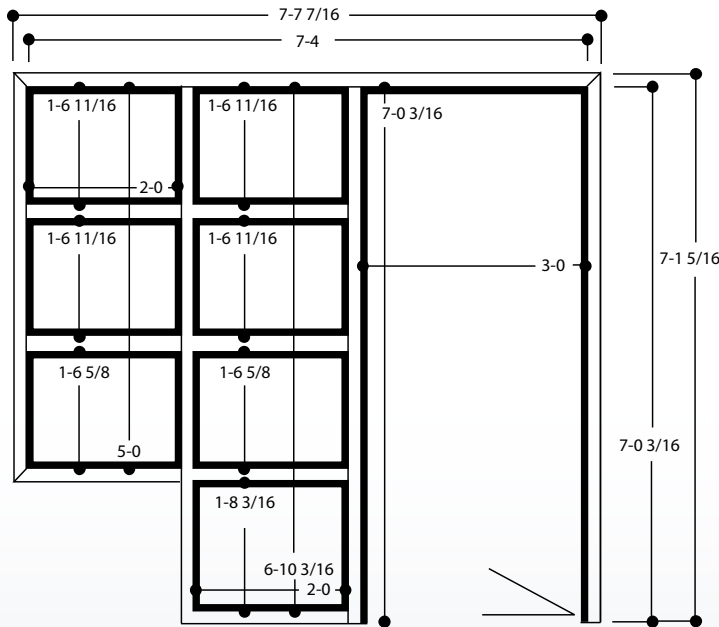


Buildings Of Worship



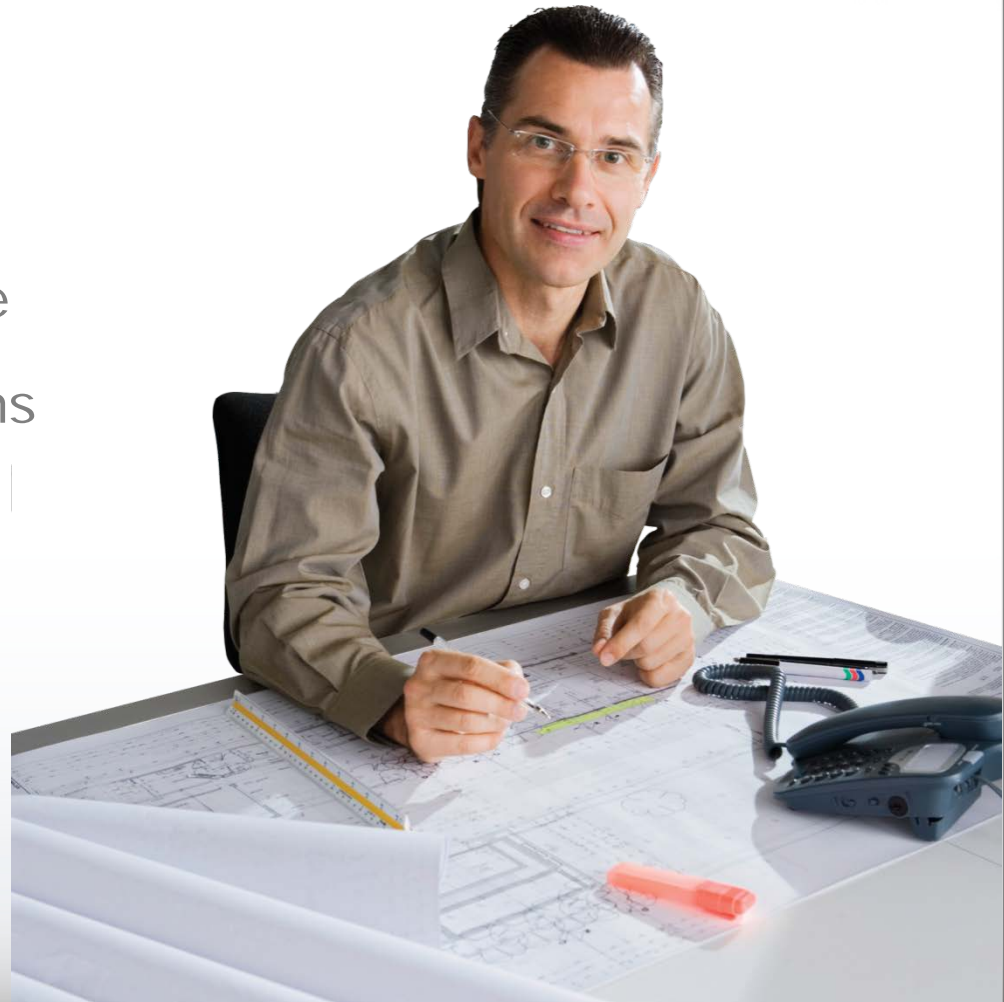
Single Family

CAD Details – Manufacturers' websites



Specifications

- 4.Specs[©]
- SpecLink[©]
- Factory Specification Service
- Project Specific Specifications
 - Steel Gauge
 - Frame types - profiles
 - Finishes
 - Casing Options
 - Galvanizing





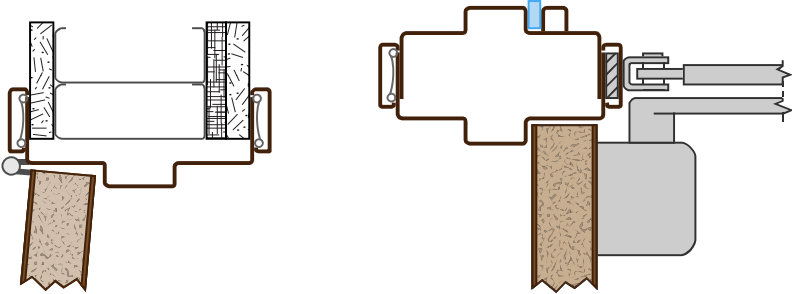
PREFINISHED STEEL DOOR FRAMES

A DIVISION OF S.D.S. INDUSTRIES, INC.

Frame Profiles

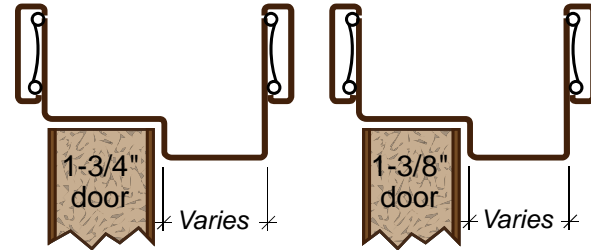
UNEQUAL RABBET (Standard)

- Use with 1 3/4" or 1 3/8" doors
- 18 ga. or 20 ga.



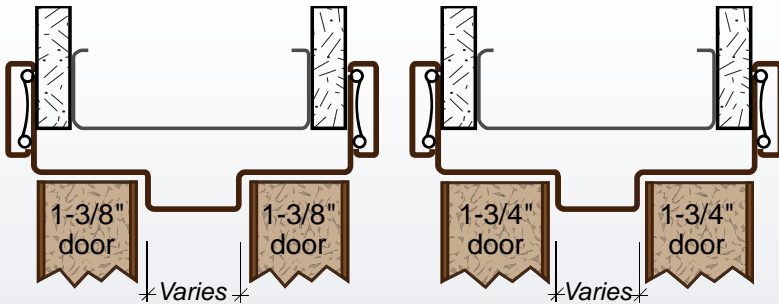
SINGLE RABBET

- Use with 1 3/4" or 1 3/8" door
- 18 ga. only



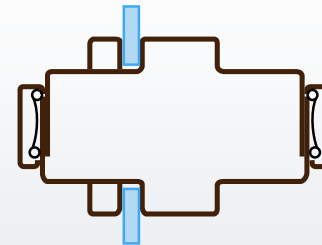
EQUAL RABBET

- Use with 2 ea. 1 3/4" doors or 2 ea. 1 3/8" doors
- 18 ga. only



MULLIONS

- 18 ga. or 20 ga.
- For sidelight, borrowed light, and transom frame





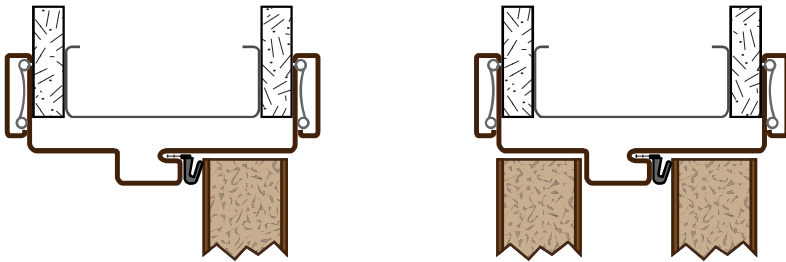
PREFINISHED STEEL DOOR FRAMES

A DIVISION OF S.D.S. INDUSTRIES, INC.

Frame Profiles

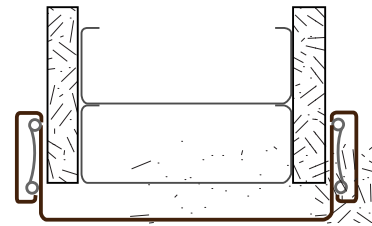
KERFED, DOUBLE RABBET

- 1 3/4" door only
- Smoke gasket/weatherstrip factory installed



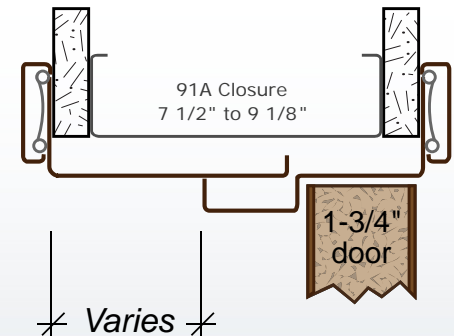
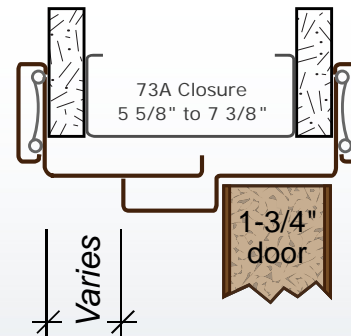
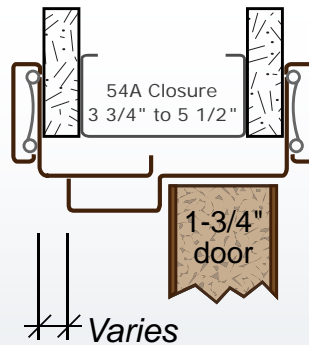
CASED OPENING

- No stop – double acting doors, pocket trim jamb



ADJUSTABLE

- 18 gauge, 1 3/4" door only
- 54A – 3 3/4" through 5 1/2" Wall
- 73A – 5 5/8" through 7 3/8" Wall
- 91A – 7 1/2" through 9 1/8" Wall





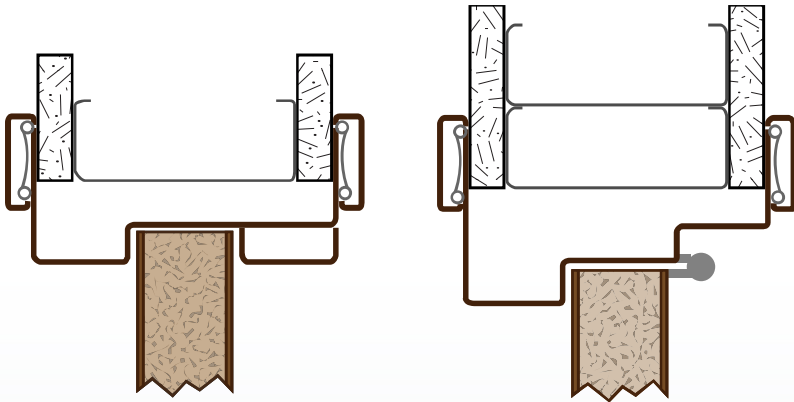
PREFINISHED STEEL DOOR FRAMES

A DIVISION OF S.D.S. INDUSTRIES, INC.

Frame Profiles

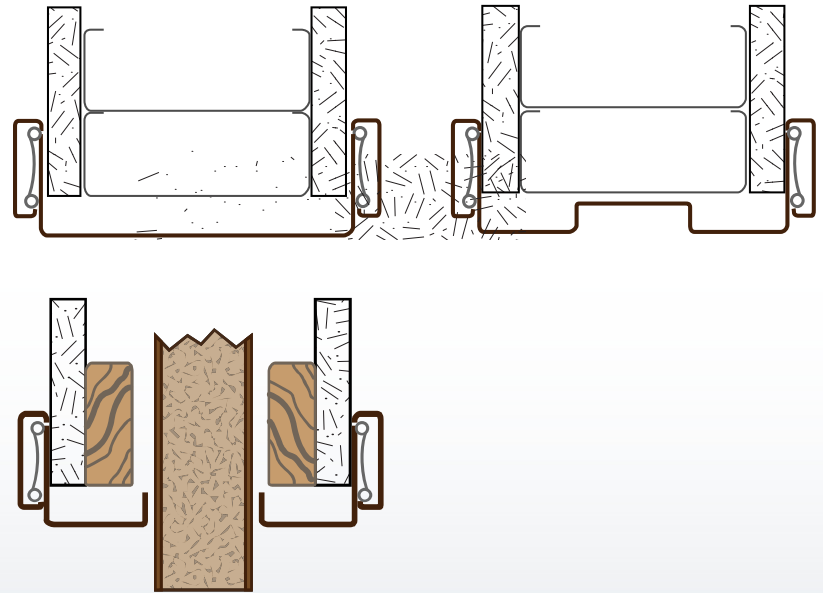
DOUBLE EGRESS

- 1 3/4" door only
- 18 ga. only



POCKET TRIM

- J-Trim for 1 3/4" or 1 3/8" pocket doors



Finishes



COLORS

- 6 Standard Finishes



- 29 Pre-Matched Custom Colors
- Can match virtually any color
- Added cost for custom colors – finishing cost still substantially lower than field finishing

Hardware Preparation

HINGES

3 1/2", 4", 4 1/2", 5"

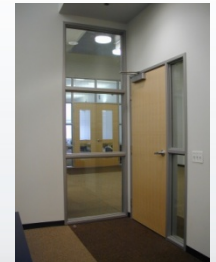
- 0.180 4 1/2" Hinge Prep
- Electric Hinge Prep available

- Radius or Square corner
- Residential and Commercial weight

STRIKES

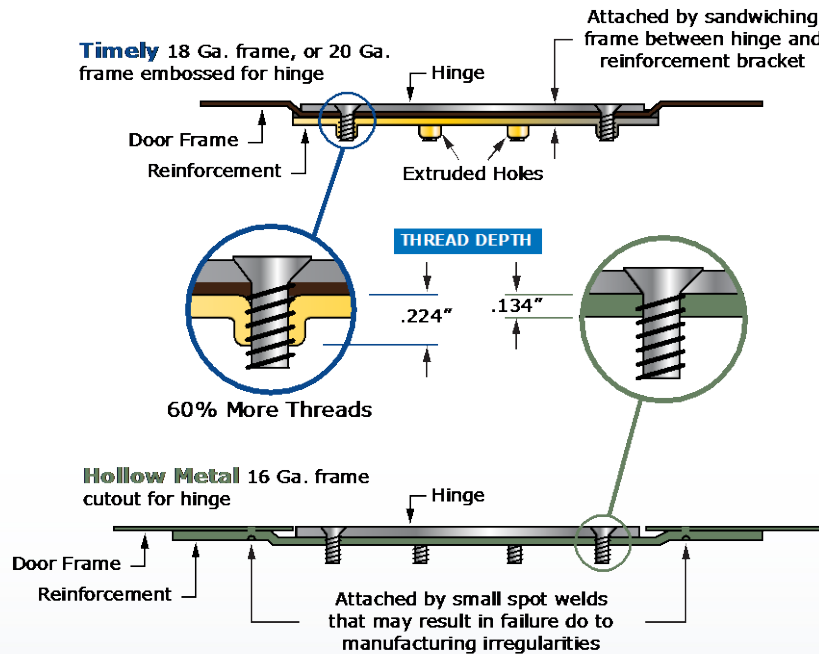
- Adjustable "T" Strike
- ASA Strike – Mortise Lock
- Electric Strikes
- Flush Bolt Strike

- Deadbolt Strike
- Roller Latch Strike
- 2 1/4" Full Lip Strike
- Euro Mortise Lock Strike



Hardware Preparation

Why Timely's Hinge Preps are so strong



TIMELY HINGE PREPARATION

- Extruded Screw holes
- Rolled threads instead of traditional tapping
- 0.224" Depth of thread capture
- No welds to fail – 100 % performance guarantee over the life of the building
- Embossed instead of cutting out metal – frame material is sandwiched between the hinge and reinforcement bracket for maximum strength

HOLLOW METAL HINGE PREPARATION

- Screw holes drilled in 10 ga. (0.134") steel reinforcement plate
- Threads tapped with traditional tapping machinery
- 0.134" Depth of thread capture (same as thickness of reinforcement)
- 6 spot welds are the only connection between the reinforcement plate and frame
- Failure of welds cause total failure of opening

Hardware Preparation

FRAME REINFORCEMENTS – Exceeds ASTM A250.8 (SDI)



- Regular Arm Closer
- Door Guard
- Parallel Arm Closer
- Rim Exit Device Strike
- Coordinator Reinforcement
- Surface overhead stops and holders
- Double Acting Spring Hinges
- Continuous Hinges





Custom Hardware Prep Capabilities



Electronic
Power
Transfers



- Concealed Vertical Rod Exit Device strikes
- Electronic Power Transfers (EPT)
- Overhead Concealed Stops and holders
- Overhead Concealed Closers
- Center Hung Pivot sets
- Rescue hardware
- Recessed Magnetic contacts and switches

Double Egress Frame



- The introduction of the new Timely Double Egress (DE) frame
- Your project requirements can be achieved with a frame that is consistent with the rest of the project.

Asymmetrical Borrowed Light



- Recently, we introduced a borrowed light with a sloped sill.
- Can now create corner connections at a multitude of angles
- No longer limiting us to traditional square or rectangular borrowed lights.

Inverted Stop Pocket Jamb



- Door closes into a recess on the jamb creating privacy desired for these applications
- The jamb can be prepared for the lock strike making the opening both private and secure

Extended Sill



- A sill face of up to 12" high is now available from Timely
- Much easier to keep the sidelight glass clean
- The flat surface meets ADA requirements

TIMELY

PREFINISHED STEEL DOOR FRAMES

A DIVISION OF S.D.S. INDUSTRIES, INC.

Summary



Summary

OUTPERFORMS TRADITIONAL HOLLOW METAL FRAMES



Lateral Impact
Security
Total Door Weight
Hinge Reinforcement



UNMATCHED DESIGN FLEXIBILITY



Finishes
Casing Options
Borrowed lights, transoms
and sidelights



LOWER TOTAL OPENING COST



Reduces Distribution
and Installation
Eliminates
finishing labor
Lower material costs
Sustainability





Thank you for your time.

- Contact info: Timely Industries, Inc.
10241 Norris Ave.
Pacoima, CA 91331
- Website: www.timelyframes.com
- Phone: (800)247-6242
818-492-3447 (Direct)
- Email: techdept@timelyframes.com
- Name: Dennis Nichols
Technical Services Manager