

OFFICE PROFESSIONAL



- Uniformity of all interior doors and frames – including stairwells and double egress frames
- Economical solution without sacrificing performance or quality
- Fire rated sidelights and borrowed lights available
- Ideal for either wood stud or steel stud framing



FRAME SELECTION RECOMMENDATIONS

		Classic	Classic	Adjustable	Kerfed	Adjustable Kerfed	Double Egress	Pocket Trim
		S	C	A	CK	AK	DE	P
Common Areas	Main Entrance	H	•	•	•	•	•	•
	Secondary Entrance	M	•	•	•	•	•	•
	Corridor Offices	M	O	O	O	P	•	•
	Interior Offices	L	P	O	O	O	•	•
	Restrooms	M	P	O	O	O	•	•
	Meeting Rooms	L	O	O	O	P	•	•
	Closet SS/PR	L	P	O	O	•	•	•
	Sidelight		•	P	•	•	•	•
	Borrowed Light		O	P	O	•	•	•
	Mechanical/Electric	L	•	O	O	P	•	•
	Stairwell	L	•	O	•	P	•	•

FREQUENCY H = High M = Medium L = Low
 USE OF FRAME P = Preferred O = Optional • = not recommended

ACCESSORY HARDWARE

TA-10 Regular Arm Closer Reinforcement – Can be used for All Frames

TA-12 Parallel Arm Closer Reinforcement – Classic Frames only

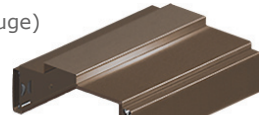
TA-47 Parallel Arm Closer Reinforcement – Kerf Frames only

CLASSIC FRAME

S C

S-Series (20 gauge)

General use for all interior openings.



Minimum Jamb Depth – 2 5/8"

Maximum Jamb Depth – 5 3/8"

Fire Rating – 90 Minutes
 (Minimum Jamb Depth 3 3/8" for rating)

Maximum Door Weight – 500 lbs.

Shown with
TA-8 Steel
Casing as
example.

C-Series (18 gauge)

General use for all interior openings requiring additional strength and impact resistance of 18 gauge steel.

Minimum Jamb Depth – 2 5/8"

Maximum Jamb Depth – 13"

Fire Rating – 90 Minutes (Minimum Jamb Depth 3 3/8" for rating)

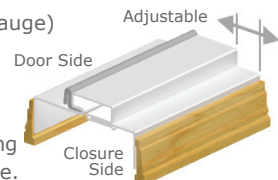
Maximum Door Weight – 500 lbs.

ADJUSTABLE FRAME

A

A-Series (18 gauge)

Use for interior openings with uneven or odd sized walls requiring non-stock wall size.



Adjustable jamb thickness makes this frame Ideal for remodel projects.

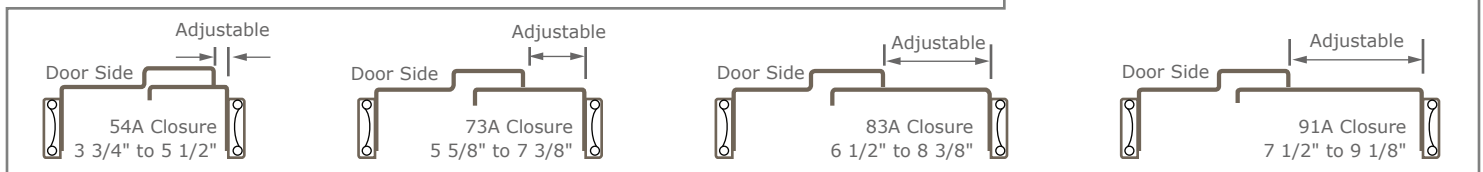
Minimum Jamb Depth – 3 3/4"

Maximum Jamb Depth – 9 1/8"

Fire Rating – 90 Minutes

Maximum Door Weight – 500 lbs.

Shown with
Wood Casing
supplied by others
as example.



OFFICE PROFESSIONAL

KERFED

CK

CK-Series (18 gauge)

Use for interior and exterior openings requiring a seal against smoke, sound, weather, and light. Kerfed stop with factory installed seal.

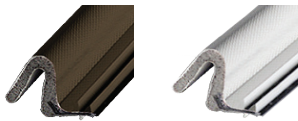
Shown with TA-8 Steel Casing as example.

Minimum Jamb Depth – 4"

Maximum Jamb Depth – 8"

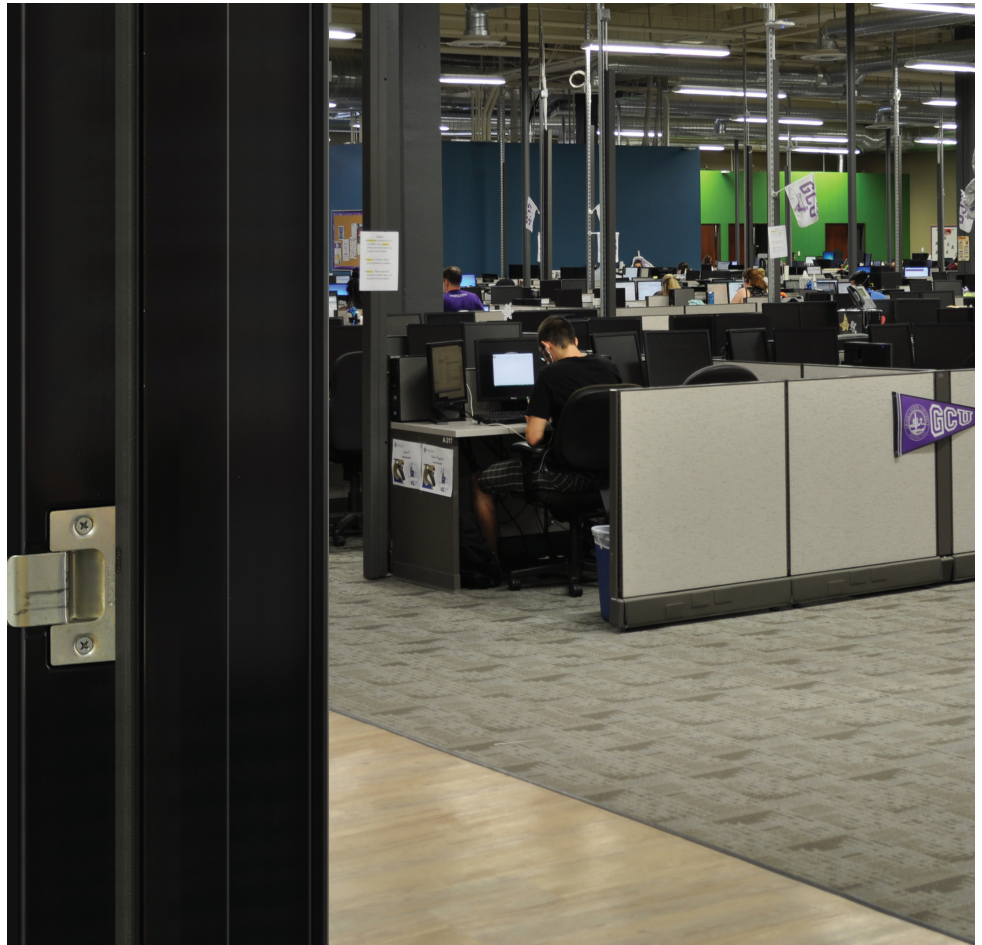
Fire Rating – 90 Minutes

Maximum Door Weight – 500 lbs.



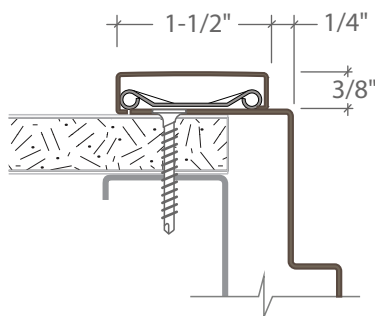
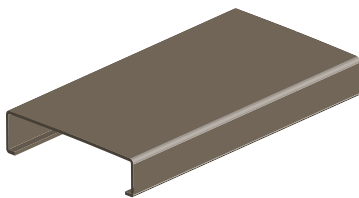
TA-46 Gasket: Weather Strip/Smoke Seal. Available in Browntone and White.

Note: Specify Color and Length.

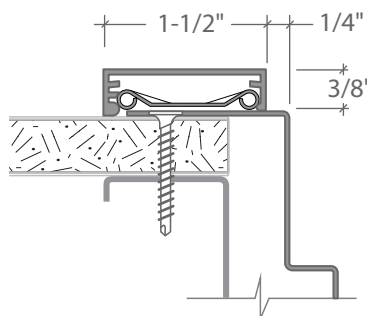
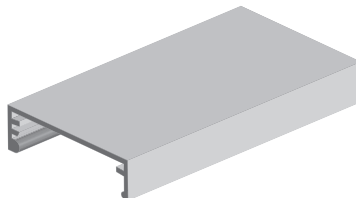


CASING RECOMMENDATIONS

TA-8 Steel



TA-23 Aluminum



TA-28 Aluminum

