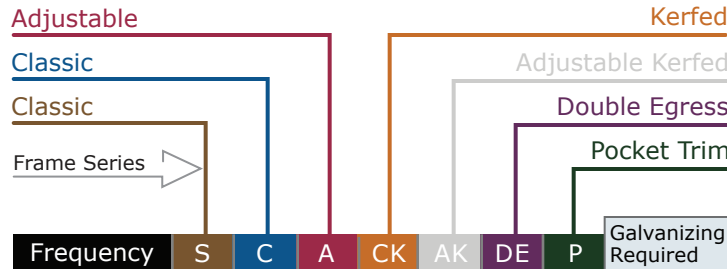


MEDICAL OFFICE

- Uniformity of all interior doors and frames – including stairwells and double egress frames
- Economical solution without sacrificing performance or quality
- Fire rated sidelights and borrowed lights available
- Ideal for either wood stud or steel stud framing
- Rescue hardware frames available for patient bathrooms
- Adaptable to specialized hardware requirements and lead lining



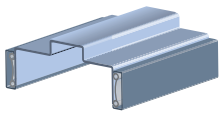
FRAME SELECTION RECOMMENDATIONS



| | Frequency | Frame Series | | | | | | | Galvanizing Required |
|------------------------|-----------|--------------|---|---|----|----|----|---|----------------------|
| | | S | C | A | CK | AK | DE | P | |
| Main Entrance | H | • | • | • | • | • | • | • | H |
| Secondary Entrance | M | • | • | • | • | • | • | • | H |
| Corridor Offices | M | O | O | O | P | • | • | • | H |
| Interior Offices | L | P | O | O | O | • | • | • | H |
| Restrooms | M | P | O | O | O | • | • | • | Y |
| Meeting Rooms | I | O | O | O | P | • | • | • | H |
| Exam | M | P | O | O | O | • | • | • | H |
| X Ray – Lead Lined | L | • | P | • | • | • | • | • | H |
| Mechanical/Electric | L | • | O | O | P | • | • | • | H |
| Secure Storage | L | • | P | O | • | • | • | • | H |
| Closet SS/PR | L | P | O | O | • | • | • | • | H |
| Closet Bi-pass | L | • | P | O | • | • | • | • | H |
| Closet Bi-fold | L | P | O | O | • | • | • | • | H |
| Pocket | | • | • | • | • | • | • | P | H |
| Stairwell | | • | O | • | • | • | • | • | H |
| Sidelight | | • | P | • | • | • | • | • | H |
| Borrowed Light | L | O | P | O | • | • | • | • | H |
| Corridors – Dbl Egress | L | • | • | • | • | • | P | • | H |

| | | |
|-----------------------------------|--|--|
| Frequency | Use of Frame | Galvanizing Required |
| H = High M = Medium L = Low | P = Preferred O = Optional • = not recommended | Y = Always H = Galvanize in Humid Climate |

CLASSIC FRAME **S** **C**

S-Series (20 gage, Factory Prefinished) 

General use for all interior openings.

Minimum Jamb Depth – 2 1/4"

Maximum Jamb Depth – 5 3/8"

Fire Rating – 90 Minutes (Minimum Jamb Depth 3 3/8" for rating)

Maximum Door Weight – 500 lbs.

C-Series (18 gage, Factory Prefinished)

General use for all interior openings requiring additional strength and impact resistance of 18 gage steel.

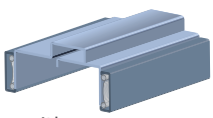
Minimum Jamb Depth – 2 1/4"

Maximum Jamb Depth – 13"

Fire Rating – 90 Minutes (Minimum Jamb Depth 3 3/8" for rating)

Maximum Door Weight – 500 lbs.

ADJUSTABLE FRAME **A**

A-Series (18 gage, electro-galvanized, Factory Prefinished) 

Use for interior openings with uneven or odd sized walls requiring non-stock wall size. Adjustable jamb thickness makes this frame Ideal for remodel projects.

Minimum Jamb Depth – 3 3/4"

Maximum Jamb Depth – 12"

Fire Rating – 90 Minutes

Maximum Door Weight – 500 lbs.

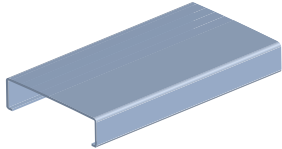
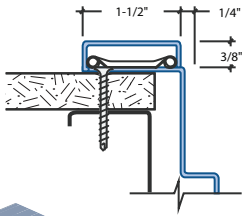
MEDICAL OFFICE

Accessory Hardware

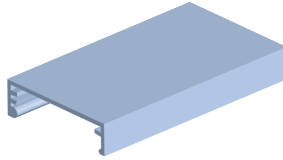
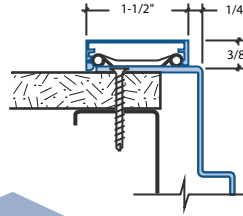
- TA-10 Regular Arm Closer Reinforcement - Can be used on all Frames
- TA-12 Parallel Arm Closer Reinforcement - Classic Frames only
- TA-47 Parallel Arm Closer Reinforcement - Kerf Frames only

CASING RECOMMENDATIONS

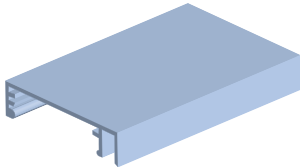
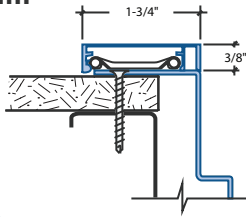
TA-8 Steel



TA-23 Aluminum

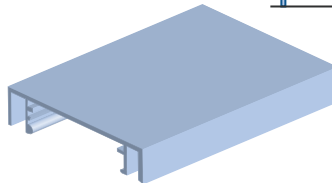
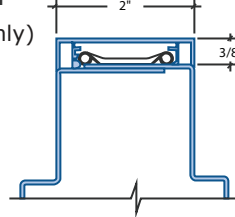


TA-28 Aluminum



TA-28M Aluminum

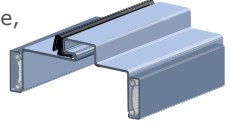
(For use on mullions only)



KERFED FRAME

CK

CK-Series (18 gage, electro-galvanized, Factory Prefinished)



Use for interior and exterior openings requiring a seal against smoke, sound, weather, and light. Kerfed stop with factory installed seal.

Minimum Jamb Depth - 4"

Maximum Jamb Depth - 8"

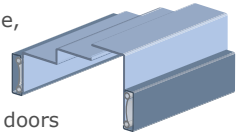
Fire Rating - 90 Minutes

Maximum Door Weight - 500 lbs.

DOUBLE EGRESS FRAME

DE

DE-Series (18 gage, Factory Prefinished)



Use for cross corridor fire separation where doors are held open during normal use.

Minimum Jamb Depth - 4 3/4"

Maximum Jamb Depth - 13"

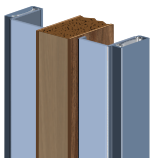
Fire Rating - 90 Minutes

Maximum Door Weight - 250 lbs.

POCKET DOOR TRIM KIT

P

P-Series (18 gage)



Use to trim out pocket doors so they have the same appearance as other frames for the project.

Minimum Jamb Depth - 4"

Maximum Jamb Depth - 13"

Fire Rating - none

Maximum Door Weight - N/A