

## LODGING



- Uniformity of all interior doors and frames – including stairwells and double egress frames
- Less damage since doors and frames can be installed after all furniture is in place
- Economical solution without sacrificing performance or quality
- Ideal for either wood stud or steel stud framing

### FRAME SELECTION RECOMMENDATIONS

	Frequency	Classic	Classic	Adjustable	Kerfed	Adjustable Kerfed	Double Egress	Pocket Trim
		S	C	A	CK	AK	DE	P
Common Areas	Main Entrance	H	•	•	•	•	•	•
	Secondary Entrance	M	•	•	•	•	•	•
	Corridor Offices	M	O	O	O	P	•	•
	Restrooms	M	O	O	O	P	•	•
	Laundry	M	O	O	O	P	•	•
	Pool	M	O	O	O	P	•	•
	Exercise	M	O	O	O	P	•	•
	Maintenance	L	O	O	O	P	•	•
	Meeting Rooms	L	O	O	O	P	•	•
	Interior Offices	L	P	O	O	O	•	•
	Secure Storage	L	•	P	O	•	•	•
	Mech./Elect	L	•	O	O	P	•	•
	Stairwell	L	•	O	O	P	•	•
	Corridors – Dbl. Egress	L	•	•	•	•	•	•
Rooms	Entry	M	O	O	•	P	•	•
	Bath	L	P	O	O	•	•	•
	Furnace	L	P	O	•	•	•	•
	Bedroom	L	P	O	O	•	•	•
	Communicating	L	•	P	•	O	•	•
	Closet SS/PR	L	P	O	O	•	•	•
	Closet Bi-pass	L	•	P	•	•	•	•
	Closet Bi-fold	L	P	O	•	•	•	•
	Pocket	L	•	•	•	•	•	P

FREQUENCY H = High M = Medium L = Low  
 USE OF FRAME P = Preferred O = Optional • = not recommended

### CLASSIC FRAME

S C

#### S-Series (20 gauge)

General use for all interior openings.



Minimum Jamb Depth – 2 5/8"

Maximum Jamb Depth – 5 3/8"

Fire Rating – 90 Minutes

(Minimum Jamb Depth 3 3/8" for rating)

Maximum Door Weight – 500 lbs.

Shown with  
TA-8 Steel  
Casing as  
example.

#### C-Series (18 gauge)

General use for all interior openings requiring additional strength and impact resistance of 18 gauge steel.

Minimum Jamb Depth – 2 5/8"

Maximum Jamb Depth – 13"

Fire Rating – 90 Minutes (Minimum Jamb Depth 3 3/8" for rating)

Maximum Door Weight – 500 lbs.

### ADJUSTABLE FRAME

A

#### A-Series (18 gauge)

Use for interior openings with uneven or odd sized walls requiring non-stock wall size.

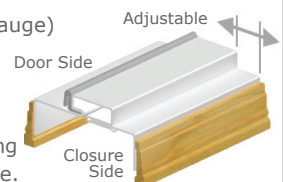
Adjustable jamb thickness makes this frame ideal for remodel projects.

Minimum Jamb Depth – 3 3/4"

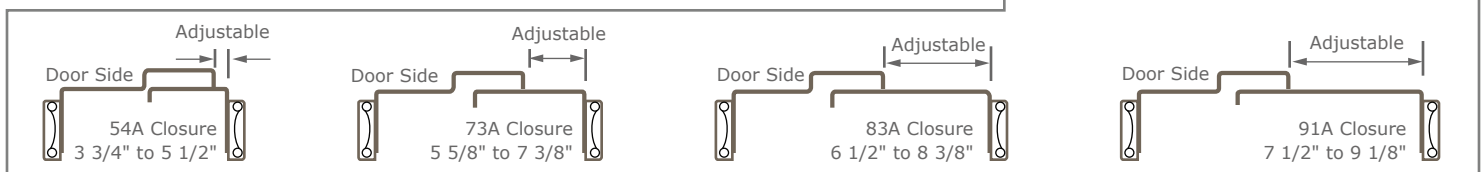
Maximum Jamb Depth – 9 1/8"

Fire Rating – 90 Minutes

Maximum Door Weight – 500 lbs.



Shown with  
Wood Casing  
**supplied by  
others**  
as example.



## LODGING

### KERFED

CK

#### CK-Series (18 gauge)

Use for interior and exterior openings requiring a seal against smoke, sound, weather, and light. Kerfed stop with factory installed seal.



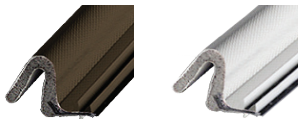
Shown with TA-8 Steel Casing as example.

Minimum Jamb Depth – 4"

Maximum Jamb Depth – 8"

Fire Rating – 90 Minutes

Maximum Door Weight – 500 lbs.



**TA-46** Gasket: Weather Strip/Smoke Seal. Available in Browntone and White.

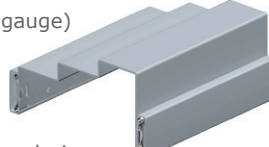
**Note:** Specify Color and Length.

### DOUBLE EGRESS FRAME

DE

#### DE-Series (18 gauge)

Use for cross corridor fire separation where doors are held open during normal use.



Shown with TA-8 Steel Casing as example.

Minimum Jamb Depth – 4 3/4"

Maximum Jamb Depth – 10 3/4"

Fire Rating – 90 Minutes

Maximum Door Weight – 250 lbs.

### POCKET DOOR TRIM KIT

P

#### P-Series (18 gauge)

Use to trim out pocket doors so they have the same appearance as other frames for the project.



Shown with TA-8 Steel Casing as example.

Minimum Jamb Depth – 4"

Maximum Jamb Depth – 13"

Fire Rating – none

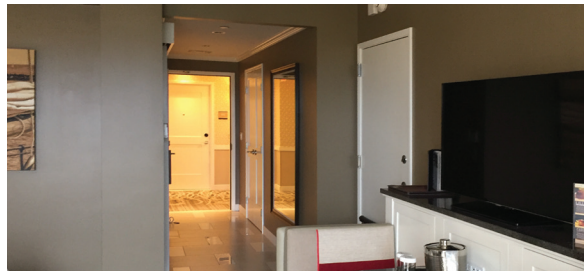
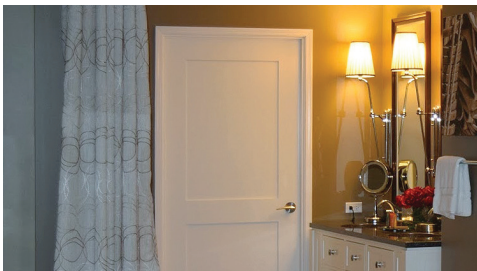
Maximum Door Weight – N/A

## ACCESSORY HARDWARE

**TA-10** Regular Arm Closer Reinforcement – Can be used for All Frames

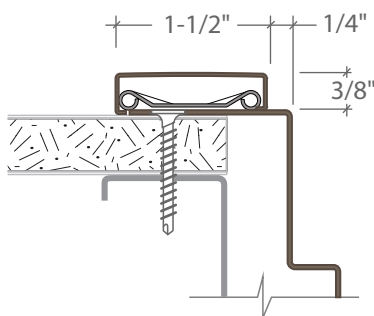
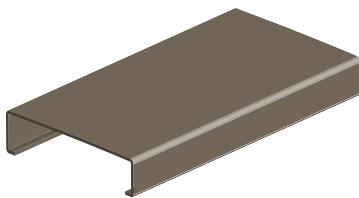
**TA-12** Parallel Arm Closer Reinforcement – Classic Frames only

**TA-47** Parallel Arm Closer Reinforcement – Kerf Frames only

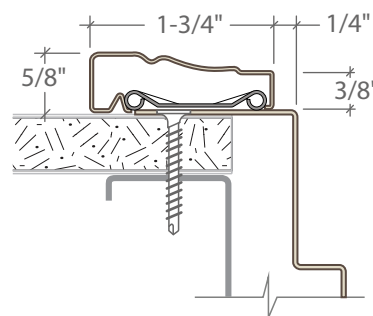
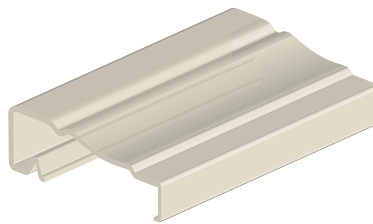


## CASING RECOMMENDATIONS

### TA-8 Standard Steel



### TA-30 Colonial Steel



### Wood Casing



For installation information see:

[Home](#) > [Products](#) > [Casing](#) > [Wood](#)