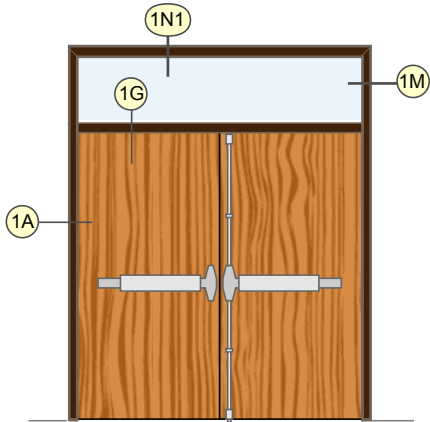
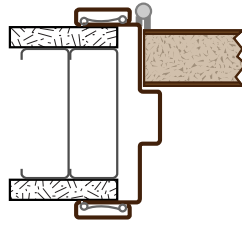


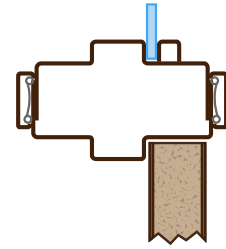
Shown with TA-8 Steel Casing as example.



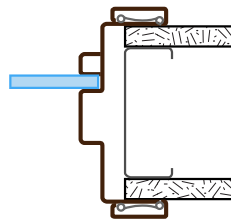
CLASSIC FRAME - PAIR WITH TRANSOM



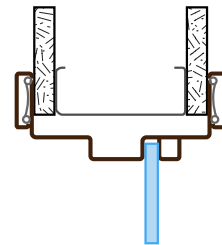
1A Jamb Hinge Side



1G Transom Header



1M Jamb Glazing



1N1 Header Glazing

**NOTE:** *Pair with Transom* refers to a pair of doors with attached glazing of your design. You are free to add vertical mullions, horizontal mullions, sidelight(s), or steps to the glazed areas.

**ROUGH OPENING DIMENSIONS**

**WIDTH**

For standard frame with transom and no sidelights, opening width is same as for a three sided frame. For a pair of doors, the rough opening width is 1 1/4" larger than the total nominal width of the doors plus the width of any astragal mounted between the doors.

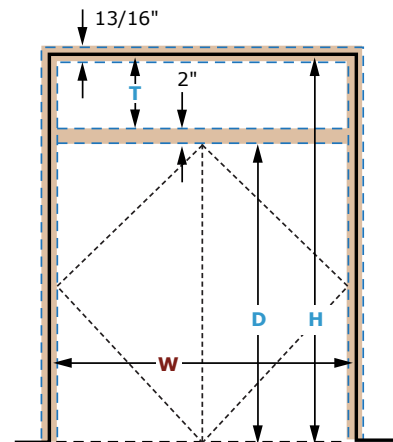
Width is sum of the nominal width of both doors leaves plus the astragal if it is mounted between the doors

**ROUGH OPENING:** Nominal Door width(s) + astragal width (if mounted between the doors) + 1 1/4"

**HEIGHT**

The rough opening height (H) is the net door area height (D) plus transom height (T) plus 2" for the transom mullion plus 13/16" for adjustment.

**ROUGH OPENING:** The rough opening height (H) is the net door area height (D) plus transom height (T) plus 2" for the transom mullion plus 13/16" for adjustment.



**W** = Nominal Door width(s) + Astragal + 1 1/4"

**H** = The rough opening height (H) is total of D + T + 2" + 13/16"

## RELATED INFORMATION

## ))) SOUND

FRAME MATERIALS	DOOR SIZE AND WEIGHT	JAMB DEPTH RANGES	RATINGS
Prefinished Steel	<b>Door Thickness:</b> 1 3/8" or 1 3/4"	<b>Standard Jamb Depths</b> <b>S-Series (20 gauge):</b> *** 3 3/4", 4", 4 5/8", 4 7/8", 5" and 5 3/8" <b>C-Series (18 gauge):</b> 3 1/2", 3 3/4", 4", 4 5/8", 4 7/8", 5", 5 3/8", 6 5/8", 6 7/8" and 7 1/4"	Not Available
<b>MAX ASSEMBLY SIZE</b>	<b>Max. Door Weight:</b> 250 Lbs. each	<b>Custom Jamb Depths</b> <b>C-Series (18 gauge):</b> 3 3/8" to 13" in 1/8" increments.	
<b>Max. Assembly Width:</b> 12' - 0" * (for Standard Jamb Depths) 10' - 1" * (for Custom Jamb Depths)	<b>Max. Door Width:</b> 2 x 4' - 0"		
<b>Max. Assembly Height:</b> 12' - 0" ** (for Standard Jamb Depths) 10' - 1" ** (for Custom Jamb Depths)	<b>Max. Door Height:</b> 12' - 0" **		
<b>Max. Mullion Length:</b> 10' - 1"			

\* Wider assemblies will have splice joints in frame and casing. \*\* Height on custom Jamb Depths is limited to 10' - 1"

\*\*\* Mullions are always supplied in 18 gauge. All widths and heights are inside dimensions - net door or glass opening size.

## FIRE RATINGS 45 MINUTE DOOR AREA

JAMB DEPTH RANGE	45 MINUTE	GENERAL INFORMATION
<b>Min. Jamb Depth:</b> 3 3/8"	<b>Width:</b> up to 6' <b>Max. Height:</b> 9' - 0"	<ol style="list-style-type: none"> <li>All openings approved for Positive and Neutral pressure unless otherwise noted.</li> <li>All ratings apply to steel stud, wood stud, or masonry construction.</li> <li>All ratings approved for category "A" and "B" doors with category "G" edge sealing.</li> <li>Timely's fire rated <i>Metal "U" Insert</i> is recommended for masonry installations. If wood subframe is used in place of <i>Metal "U" Insert</i>, it will be necessary to use fire rated drywall on both sides of wood to maintain fire rating.</li> <li>Wood or Aluminum casing does not affect ratings on door frames. Wood casing must be applied with hot melt glue or contact adhesive on 90 minute rated frames and on all glazed openings with 45 minute or 60 minute rating. On all other fire rated frames, wood casing can be applied with nails or finish head screws on jambs and mullions.</li> <li>Single frames must be prepared for strike or reinforced with (TA-47) for a rim exit device strike.</li> <li>Embossed WHI 90 min. label is available for Primed Frames only.</li> </ol>
<b>Max. Jamb Depth:</b> 13"		
All dimensions shown are inside dimensions - net door opening size.		
Distributors of Timely Frames may be approved to purchase labels and apply them to frames at their own facility. Intertek has set guidelines and a fee schedule for this program. Requirements and prices are available from Timely or Intertek.		

## FIRE RATINGS 45 MINUTE TRANSOM AREA

ASSEMBLY	GLASS AREA*	GENERAL INFORMATION
<b>Max. Width:</b> 9' - 7"	<b>Width:</b> up to 2' <b>Max. Height:</b> 8' - 11"	<ol style="list-style-type: none"> <li>All openings are approved for Positive and Neutral pressure unless otherwise noted.</li> <li>All ratings apply to steel stud, wood stud, or masonry construction.</li> <li>All ratings approved for category "A" and "B" doors with category "G" edge sealing.</li> <li>Timely's fire rated <i>Metal "U" Insert</i> is recommended for masonry installations. If wood subframe is used in place of <i>Metal "U" Insert</i>, it will be necessary to use fire rated drywall on both sides of wood to maintain fire rating.</li> <li>Aluminum casing does not affect fire rating. Wood casing must be applied with hot melt glue or contact adhesive on 90 minute rated frames and on all glazed openings with 45 minute or 60 minute rating. On all other fire rated frames, wood casing can be applied with nails or finish head screws on jambs and mullions.</li> </ol>
<b>Max. Height:</b> 9' - 11"		
All dimensions shown are inside dimensions - net door opening size.		
* Multiple Glass Areas can be created with Mullions. The only limitations are Max. Assembly Width and Height.		
** For glass widths exceeding 24" the maximum glass area is 1296 sq. in. unless approved by local AHJ.		
Distributors of Timely Frames may be approved to purchase labels and apply them to frames at their own facility. Intertek has set guidelines and a fee schedule for this program. Requirements and prices are available from Timely or Intertek.		
Visible light is 1" less in width and height		